

# Setting the SPA3102 to Bridge Mode

Document ID: 108733

## Contents

[Introduction](#)[How to set the SPA3102 to bridge mode?](#)[Related Information](#)

## Introduction

This article is one in a series to assist in the setup, troubleshooting, and maintenance of Cisco Small Business products.

### Q. How to set the SPA3102 to bridge mode?

A.

*There are two ways to set the device to Bridge Mode:*

- Set the SPA3102 to Bridge Mode using the IVR
- Set the SPA3102 to Bridge Mode using the web-based setup page

#### *Set the SPA3102 to Bridge Mode using the IVR*

In order to set the SPA3102 to Bridge Mode using the IVR, dial \*\*\*\*\* 201. The user will now be able to press 1 in order to enable or 0 to disable the device's router functionality.

#### *Set the SPA3102 to Bridge Mode using the web-based setup page*

In order to set the SPA3102 to Bridge Mode using the web-based setup page, complete these steps:

##### *Step 1:*

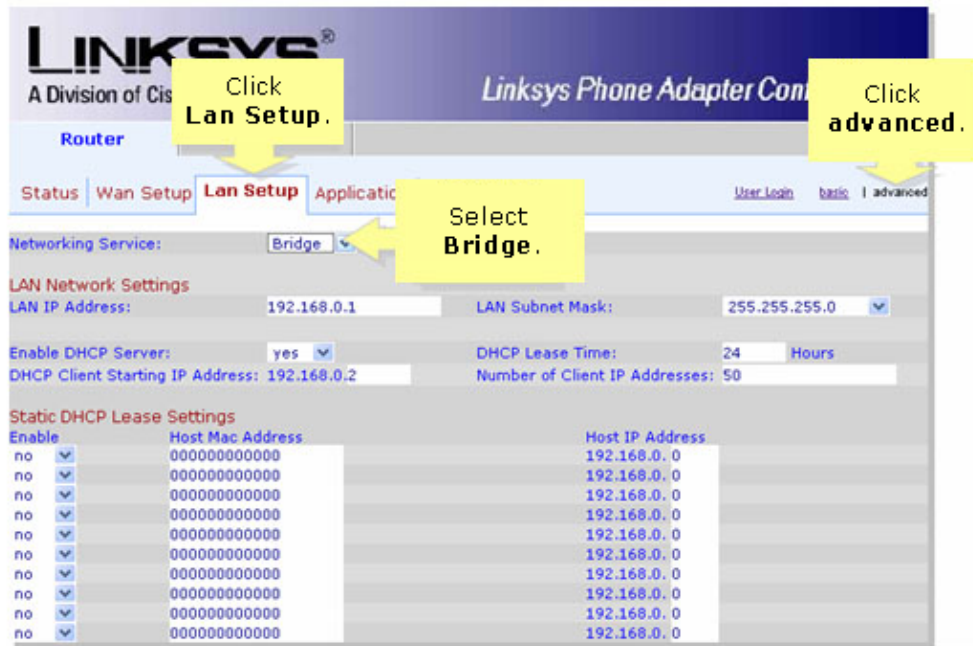
Access the SPA3102's web-based setup page. For instructions click [here](#).

##### *Step 2:*

When the SPA3102's web-based setup page appears, click *advanced* and then *Lan Setup*.

##### *Step 3:*

Under *Networking Service*, select *Bridge* from the drop-down menu.



*Step 4:*

Click .

## Related Information

- [Technical Support & Documentation – Cisco Systems](#)