

How to Configure MGCP with Digital PRI and Cisco CallManager

Document ID: 23966

Contents

Introduction

Prerequisites

- Requirements
- Components Used
- Related Products
- Conventions

Configure the Gateway

- Network Diagram
- Configurations
- Verify the Gateway Configuration
- Troubleshoot the Gateway Configuration

Configure Cisco CallManager

- Configuration Steps
- Verify the Cisco CallManager Registration Status
- Troubleshoot Cisco CallManager

Verify

- Debug Output for Outbound Calls from IP Phone to PSTN
- Debug MGCP Packet from Gateway for the Same Call
- Debug Output for Inbound Calls from PSTN
- Debug MGCP Packet from Gateway

Troubleshoot

- Cause i = 0x82B2 – Requested facility
- Cause i = 0x80E5 – Message not compatible with call state

Related Information

Introduction

This document explains how to configure Media Gateway Control Protocol (MGCP) with PRI when you use Cisco IOS® Software Release 12.4(5b). The document also demonstrates the registration process, successful inbound and outbound calls from PSTN, as well as the debugs and Cisco CallManager trace for the calls.

Symptoms

You can potentially encounter these symptoms when you configure Cisco CallManager with Cisco IOS MGCP gateways with PRI ports:

- MGCP gateway does not register with Cisco CallManager. Refer to MGCP Gateway Registration Failure with Cisco CallManager for more information.
- MGCP PRI port does not register with Cisco CallManager. Ensure that the PRI port is connected to the telco line with layer 1 and 2 in the active status.

Prerequisites

Requirements

Ensure that you meet these requirements before you attempt this configuration:

- Run Cisco IOS Software Release 12.4(5b) with Cisco IOS gateway with digital PRI and Cisco CallManager 4.1.

Note: Cisco CallManager does not support the configuration or use of a fractional PRI when you use it with MGCP. If fractional PRI is necessary you can use H.323 instead of MGCP.

Components Used

The information in this document is based on these software and hardware versions:

- Cisco 2620 router
- NM-4VWIC-MBRD
- Cisco IOS Software Release 12.4(5b) and Cisco IOS Software Release 12.4(fc2)
- Cisco CallManager version 4.1

The information in this document was created from the devices in a specific lab environment. All of the devices used in this document started with a cleared (default) configuration. If your network is live, make sure that you understand the potential impact of any command.

Related Products

This setup can also use any of these Cisco IOS gateways: VG200, 2600, 3600, that run the same Cisco IOS software release. Cisco CallManager version 3.1 or later supports this configuration.

Conventions

Refer to Cisco Technical Tips Conventions for more information on document conventions.

Configure the Gateway

In this section, you are presented with the information to configure the Gateway.

Note: Use the Command Lookup Tool (registered customers only) to find more information on the commands used in this document.

Network Diagram

This section uses this network setup:



Configurations

This document uses this configuration:

- AV-2620-4

AV-2620-4

```
AV-2620-4#show run
version 12.4
no parser cache
no service single-slot-reload-enable
service timestamps debug datetime msec
service timestamps log datetime msec
service password-encryption
!
hostname AV-2620-4
!
logging rate-limit console 10 except errors
enable secret 5 xxxx
enable password 7xxxx
!
voice-card 1
!
ip subnet-zero
!
!
no ip domain-lookup
!
no ip dhcp-client network-discovery
mgcp
mgcp call-agent 172.16.240.124 2427 service-type mgcp version 0.1
ccm-manager mgcp

!--- These three commands are necessary to enable Cisco CallManager
!--- to control the gateway. This enables the trombone feature, which
!--- is the feature that lets Cisco CallManager control the gateway.

mgcp dtmf-relay voip codec all mode out-of-band
mgcp rtp unreachable timeout 1000 action notify
mgcp modem passthrough voip mode cisco
mgcp sdp simple
mgcp package-capability rtp-package
mgcp package-capability sst-package
no mgcp timer receive-rtcp
no mgcp explicit hookstate
isdn switch-type primary-ni
call rsvp-sync
!
!
ccm-manager music-on-hold
ccm-manager config server 172.16.240.124
ccm-manager config

!
!
controller T1 1/0
 framing esf
 clock source internal
 linecode b8zs
 cablelength short 133
```

```

pri-group timeslots 1-24 service mgcp
!!
interface FastEthernet0/0
 ip address 172.16.15.129 255.255.255.0
 ip helper-address 172.16.15.10
 no ip mroute-cache
 duplex auto
 speed auto

!
interface Serial0/2/0:23
 no ip address
 no logging event link-status
 isdn switch-type primary-ni
 isdn incoming-voice voice
 isdn T310 10000
 isdn bind-l3 ccm-manager
 no cdp enable
!no ip http server
!
snmp-server community public RO
snmp-server community private RW
snmp-server packetsize 4096

!
voice-port 0/2/0:23
!
dial-peer cor custom
!
!
dial-peer voice 9991023 pots
 application mgcpapp
 port 0/2/0:23

!--- application mgcpapp or
!--- service MGCPAPP
!--- is not required if isdn bind-l3 ccm-manager
!--- is applied on the serial interface of the T1/E1
!--- that corresponds to the voice-port mentioned in pots dial-peer.

!
!
line con 0
 exec-timeout 0 0
line aux 0
line vty 0 4
 exec-timeout 0 0
 password 7 xxxx
 login
line vty 5 15
 login
!
!
end

```

Note: With MGCP, you cannot block incoming calls on the basis of the calling party Directory Number (DN). However, you can do so if you use H323.

Note: After you make any configuration changes on the MGCP gateway, issue these two global commands in sequence on the MGCP gateway for the changes to take effect.

```
no mgcp
```

```
mgcp
```

These **mgcp** commands in a similar sequence are used to reset MGCP in IOS gateways. If any of the MGCP interfaces fail, reset the interface by issuing a **shutdown** and the a **no shutdown** command in the respective interface configuration mode. Then reset MGCP in a similar manner on the gateway in order to solve the issue.

Verify the Gateway Configuration

Use this section to confirm that your configuration works properly.

The Output Interpreter Tool (registered customers only) (OIT) supports certain **show** commands. Use the OIT to view an analysis of **show** command output.

- **show ccm-manager** displays the registration status with Cisco CallManager.
- **show mgcp endpoint** displays the status of ports.

The output of these commands is shown here:

```
AV-2620-4#show ccm-manager
MGCP Domain Name: AV-2620-4
Priority   Status           Host
=====
Primary   Registered         172.16.240.124
First Backup   None Second Backup   None
Current active Call Manager: 172.16.240.124
Backhaul/Redundant link port: 2428
Failover Interval:      30 seconds
Keepalive Interval:     15 seconds
Last keepalive sent:    00:45:31 (elapsed time: 00:00:04)
Last MGCP traffic time: 00:45:31 (elapsed time: 00:00:04)
Last failover time:     None
Switchback mode:       Graceful
MGCP Fallback mode:    Not Selected
Last MGCP Fallback start time: 00:00:00
Last MGCP Fallback end time: 00:00:00
PRI Backhaul Link info:
  Link Protocol:      TCP
  Remote Port Number: 2428
  Remote IP Address: 172.16.240.124
  Current Link State: OPEN
  Statistics:
    Packets recvd:    32
    Recv failures:    0
    Packets xmitted:  32
    Xmit failures:    0
  PRI Ports being backhauled:
    Slot 1, port 0
Configuration Auto-Download Information
=====
No configurations downloaded
Current state: Automatic Configuration Download feature is disabled
Configuration Error History:
FAX mode: cisco
```

```
AV-2620-4#show mgcp endpoint
```

```
Interface T1 0/2/0
```

ENDPOINT-NAME	V-PORT	SIG-TYPE	ADMIN
S0/SU2/ds1-0/1@AV-2620-4	0/2/0:23	none	up
S0/SU2/ds1-0/2@AV-2620-4	0/2/0:23	none	up
S0/SU2/ds1-0/3@AV-2620-4	0/2/0:23	none	up
S0/SU2/ds1-0/4@AV-2620-4	0/2/0:23	none	up

S0/SU2/ds1-0/5@AV-2620-4	0/2/0:23	none	up
S0/SU2/ds1-0/6@AV-2620-4	0/2/0:23	none	up
S0/SU2/ds1-0/7@AV-2620-4	0/2/0:23	none	up
S0/SU2/ds1-0/8@AV-2620-4	0/2/0:23	none	up
S0/SU2/ds1-0/9@AV-2620-4	0/2/0:23	none	up
S0/SU2/ds1-0/10@AV-2620-4	0/2/0:23	none	up
S0/SU2/ds1-0/11@AV-2620-4	0/2/0:23	none	up
S0/SU2/ds1-0/12@AV-2620-4	0/2/0:23	none	up
S0/SU2/ds1-0/13@AV-2620-4	0/2/0:23	none	up
S0/SU2/ds1-0/14@AV-2620-4	0/2/0:23	none	up
S0/SU2/ds1-0/15@AV-2620-4	0/2/0:23	none	up
S0/SU2/ds1-0/16@AV-2620-4	0/2/0:23	none	up
S0/SU2/ds1-0/17@AV-2620-4	0/2/0:23	none	up
S0/SU2/ds1-0/18@AV-2620-4	0/2/0:23	none	up
S0/SU2/ds1-0/19@AV-2620-4	0/2/0:23	none	up
S0/SU2/ds1-0/20@AV-2620-4	0/2/0:23	none	up
S0/SU2/ds1-0/21@AV-2620-4	0/2/0:23	none	up
S0/SU2/ds1-0/22@AV-2620-4	0/2/0:23	none	up
S0/SU2/ds1-0/23@AV-2620-4	0/2/0:23	none	up

Troubleshoot the Gateway Configuration

Use this section to troubleshoot your configuration.

Note: Refer to Important Information on Debug Commands before you use **debug** commands.

- **debug mgcp packet** enables you to verify whether the gateway communicates with Cisco CallManager.

The output of this command is shown here:

```

AV-2620-4#debug mgcp packet
Media Gateway Control Protocol packets debugging is on
AV-2620-4#terminal monitor
AV-2620-4#

*Jan 23 05:19:39.703: MGCP Packet sent to 172.16.240.124:2427---->
NTFY 221919402 *@MGCP MGCP 0.1
X: 0
O:
<--- *Jan 23 05:19:39.771: MGCP Packet received from 172.16.240.124:2427---->
200 221919402
<---

*Jan 23 05:19:54.703: MGCP Packet sent to 172.16.240.124:2427---->
NTFY 221919403 *@MGCP MGCP 0.1
X: 0
O:
<---

*Jan 23 05:19:54.771: MGCP Packet received from 172.16.240.124:2427---->
200 221919403
<---

*Jan 23 05:20:09.703: MGCP Packet sent to 172.16.240.124:2427---->
NTFY 221919404 *@MGCP MGCP 0.1
X: 0
O:
<---

*Jan 23 05:20:09.771: MGCP Packet received from 172.16.240.124:2427---->
200 221919404

```

Configure Cisco CallManager

This section describes the procedure to configure Cisco CallManager, and also provides verification information and tips to troubleshoot.

Configuration Steps

Complete these steps to configure the gateway in Cisco CallManager:

1. Choose **Device > Gateway** in the Cisco CallManager Administration page.

System Route Plan Service Feature Device User Application Help

Cisco CallManager Administration
For Cisco IP Telephony Solutions

Add a New Device
CTI Route Point
Gatekeeper
Gateway
Phone
Trunk
Device Settings

Cisco CallManager 4.1 Administration

Details

Copyright © 1999 - 2004 Cisco Systems, Inc.
All rights reserved.

This product contains cryptographic features and is subject to United States and local country laws governing import, transfer and use. Delivery of Cisco cryptographic products does not imply third-party authority to import, export, distribute or use encryption. Importers, exporters, distributors and users are responsible for compliance with U.S. and local country laws. By using this product you agree to comply with applicable laws and regulations. If you are unable to comply with U.S. local laws, return this product immediately.

A summary of U.S. laws governing Cisco cryptographic products may be found at:
<http://www.cisco.com/www/export/crypto/tool/stgqr.html>.
If you require further assistance please contact us by sending email to export@cisco.com.

2. Click on **Add a New Gateway**.

Find and List Gateways

Add a New

No current search

Find gateways where begins with Find

and show items per page. endpoints.

To list all items, click Find without any search text, or use "Device Name is not empty" as the search criteria

3. Select the Router Model for **Gateway type** and MGCP for **Device Protocol** and click **Next**.

Add a New Gateway

Select the type of gateway you would like to create:

Gateway type*

Device Protocol*

* indicates required item

4. Enter the Hostname of the router as the **Domain Name**, choose the **Cisco CallManager Group**, choose the **Installed Voice Interface Cards** on the appropriate slot and click **Insert**.

Gateway Configuration

[Back to Find/List Gateway](#)**Product:** Cisco 26XX**Protocol:** MGCP**MGCP:** New

Status: Ready

Domain Name*

AV-2620-4

Description

AV-2620-4

Cisco CallManager Group*

LAB

Installed Voice Interface Cards

Endpoint Identifiers

Module in Slot 0

NM-4VWIC-MBRD

Module in Slot 1

< None >

Module in Slot 2

< None >

Product Specific Configuration

5. Choose the **T1 card** for the subunit under the **Installed Voice Interface Cards** slots and click **Update**. A dialog box appears that prompts you to reset the gateway. Click **Ok** and then click **Reset**. Now, click **Close** in order to close the window.

Gateway Configuration

[Back to Find/List Gateway](#)

Product: Cisco 26XX

Protocol: MGCP

MGCP : AV-2620-4

Status: Insert completed

Update

Delete

Reset Gateway

Domain Name*	<input type="text" value="AV-2620-4"/>
Description	<input type="text" value="AV-2620-4"/>
Cisco CallManager Group*	<input type="text" value="LAB"/>

Installed Voice Interface Cards

Endpoint Identifiers

Module in Slot 0	
NM-4VWIC-MBRD	
Subunit 0	< None >
Subunit 1	VWIC-1MFT-T1
Subunit 2	< None >
Subunit 3	< None >

6. Click on the **Endpoint Identifier**(in this example, 0/2/0).

Gateway Configuration

[Back to Find/List Gateway](#)

Product: Cisco 26XX

Protocol: MGCP

MGCP : AV-2620-4

Status: Update completed

Update Delete Reset Gateway

Domain Name*

Description

Cisco CallManager Group*

Installed Voice Interface Cards

Endpoint Identifiers

Module in Slot 0		
NM-4VWIC-MBRD	Subunit 0	< None >
	Subunit 1	< None >
	Subunit 2	VWIC-1MFT-T1
	Subunit 3	< None >

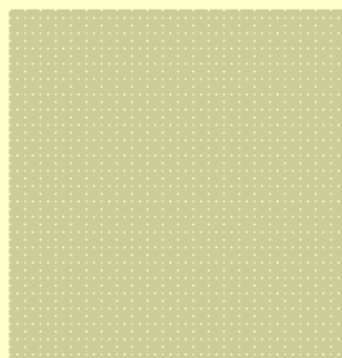
(0/2/ 0)

7. Select the option **T1-PRI**.

Gateway Configuration

[Back to MGCP Config](#)

[Back to Find/List Gateway](#)



Select protocol for this gateway

Device Protocol*

- Not Selected -

- Not Selected -

T1 - CAS

T1 - PRI

8. Select the appropriate **Device Pool** and click **Insert**.

Gateway Configuration

[Back to MGCP Config](#)
[Back to Find/List Ga](#)

Product : Cisco 26XX
Gateway : New
Device Protocol: Digital Access PRI

Status: Ready

Device Information

End-Point Name*	<input type="text" value="S0/SU2/DS1-0@AV-2620-4"/>
Description	<input type="text" value="S0/SU2/DS1-0@AV-2620-4"/>
Device Pool*	<input type="text" value="Default"/>
Call Classification*	<input type="text" value="Use System Default"/>
Network Locale	<input type="text" value="< None >"/>
Media Resource Group List	<input type="text" value="< None >"/>
Location	<input type="text" value="< None >"/>
AAR Group	<input type="text" value="< None >"/>
Load Information	<input type="text"/>
V150 (subset)	<input type="checkbox"/>

Multilevel Precedence and Preemption (MLPP) Information

MLPP Domain (e.g., "0000FF")	<input type="text"/>
MLPP Indication	<input type="text" value="Default"/>
MLPP Preemption	<input type="text" value="Default"/>

Interface Information

PRI Protocol Type*	<input type="text" value="PRI NI2"/>
Protocol Side*	<input type="text" value="User"/>
Channel Selection Order*	<input type="text" value="Bottom Up"/>
Channel IE Type*	<input type="text" value="Use Number when 1B"/>
PCM Type*	<input type="text" value="μ-law"/>
Delay for first restart (1/8 sec ticks)	<input type="text" value="32"/>
Delay between restarts (1/8 sec ticks)	<input type="text" value="4"/>
<input checked="" type="checkbox"/> Inhibit restarts at PRI initialization	
<input type="checkbox"/> Enable status poll	

Note: Channel Selection Order specifies the order in which ports are enabled from first (lowest number port) to last (highest number port), or from last to first. Valid entries are TOP_DOWN (last to first) or BOTTOM_UP (first to last). If you are not sure which port order to use, choose TOP_DOWN.

9. For the changes to take effect, click **Reset Gateway** and then click **Update**.

Gateway Configuration

[Back to MGCP Config](#)
[Back to Find/List Ga](#)
[Dependency F](#)

Product : Cisco 26XX
Gateway : S0/SU2/DS1-0@MGCP
Device Protocol: Digital Access PRI
Registration: Registered with Cisco CallManager 172.16.240.124
IP Address: 172.16.15.129

Status: Update completed.

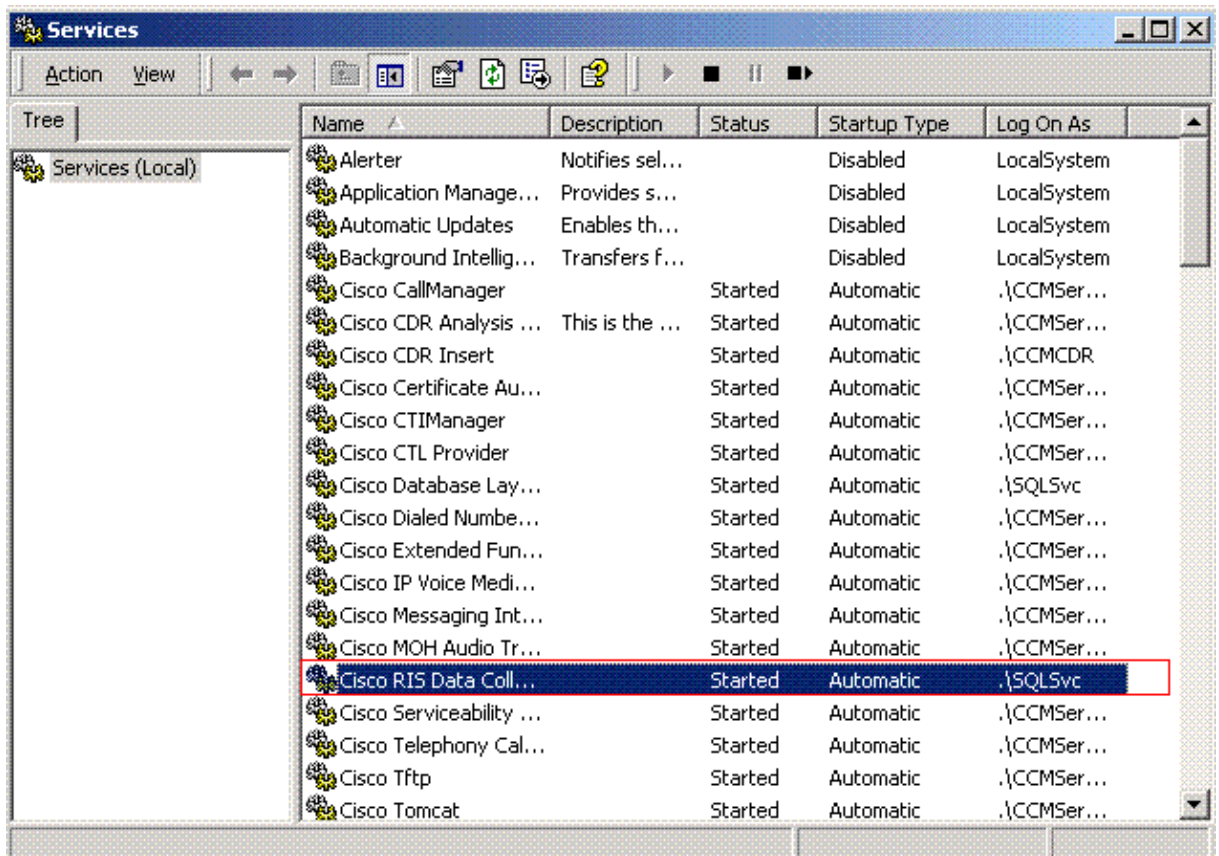
Device Information

End-Point Name*	S0/SU2/DS1-0@MGCP
Description	S0/SU2/DS1-0@MGCP
Device Pool*	Default
Call Classification*	Use System Default
Network Locale	< None >
Media Resource Group List	< None >
Location	< None >

Verify the Cisco CallManager Registration Status

Complete these steps:

1. Check the Status Monitor to see if the MGCP PRI gateway is registered. Go to **Start > Programs > Administrative tools > Performance**.
2. Ensure that RIS Data Collector service is up. Go to **Start > Programs > Administrative Tools > Services**.



Troubleshoot Cisco CallManager

Cisco CallManager Trace

Verify whether the gateway registers with Cisco CallManager. This trace is captured when the gateway registers with Cisco CallManager. The important messages are highlighted in bold.

```

01/24/2009 18:45:36.042 Cisco CallManager|MGCPBhHandler:openGateway 172.16.15.129
- Waiting for MGCPManager to register for this ipAddr|<CLID::MCS-7822-SERVER
Cluster><NID::172.16.240.124><CT::1,100,48,1.270><IP::172.16.15.129><DEV::>
01/24/2009 18:45:36.042 Cisco CallManager|MGCPBhHandler 172.16.15.129 - TCP
Established with Device, TCPHandle=0x5e65a00|<CLID::MCS-7822-SERVER-
Cluster><NID::172.16.240.124><CT::1,100,48,1.270><IP::172.16.15.129><DEV::>
01/24/2009 18:45:36.042 Cisco CallManager|MGCPHandler received msg from:
172.16.15.129
RSIP 4 *@AV-2620-4 MGCP 0.1
RM: restart
|<CLID::MCS-7822-SERVER-Cluster><NID::172.16.240.124><CT::1,100,50,1.40684>
<IP::172.16.15.129><DEV::>
01/24/2009 18:45:36.042 Cisco CallManager|<CLID::MCS-7822-SERVER-Cluster>
<NID::172.16.240.124><CT::1,100,50,1.40684><MN::MGCPEndPoint>
<MV::*@AV-2620-4><DEV::>
01/24/2009 18:45:36.042 Cisco CallManager|MGCPInit - //// RSIP <restart> from
*@AV-2620-4|<CLID::MCS-7822-SERVER-Cluster><NID::172.16.240.124>
<CT::1,100,50,1.40684><IP::172.16.15.129><DEV::>
01/24/2009 18:45:36.112 Cisco CallManager|CMPProcMon - -----Entered Router
Verification|<CLID::MCS-7822-SERVER-Cluster><NID::172.16.240.124>
01/24/2009 18:45:36.112 Cisco CallManager|CMPProcMon - ----Exited Router
Verification|<CLID::MCS-7822-SERVER-Cluster><NID::172.16.240.124>
01/24/2009 18:45:36.213 Cisco CallManager|MGCPpn9d - Started. DeviceName =
S0/SU2/ds1-0@AV-2620-4, Side = NETWORK|<CLID::MCS-7822-SERVER-
Cluster><NID::172.16.240.124><CT::1,100,58,8.1><IP::><DEV::>
01/24/2009 18:45:36.213 Cisco CallManager|MGCPHandler send MSG SUCCESSFULLY
to:172.16.15.129

```

200 4
|<CLID::MCS-7822-SERVER-Cluster><NID::172.16.240.124><CT::1,100,50,1.40684>
<IP::172.16.15.129><DEV::>
**01/24/2009 18:45:36.233 Cisco CallManager|MGCPHandler received MSG from:
172.16.15.129
NTFY 5 *@AV-2620-4 MGCP 0.1
X: 0
O:**
|<CLID::MCS-7822-SERVER-Cluster><NID::172.16.240.124><CT::1,100,50,1.40685>
<IP::172.16.15.129><DEV::>
01/24/2009 18:45:36.233 Cisco CallManager|<CLID::MCS-7822-SERVER-Cluster>
<NID::172.16.240.124><CT::1,100,50,1.40685><MN::MGCPEndPoint>
<MV::*@AV-2620-4><DEV::>
**01/24/2009 18:45:36.303 Cisco CallManager|
MGCPBhHandler:wait_MGCPRegisterBhHandler 172.16.15.129 - Notifying Mgr that
TCP is open for the registering ipAddr;|<CLID::MCS-7822-SERVER-Cluster>
<NID::172.16.240.124><CT::1,100,50,1.40684><IP::172.16.15.129><DEV::>
01/24/2009 18:45:36.313 Cisco CallManager|MGCPHandler send MSG SUCCESSFULLY
to: 172.16.15.129
200 5
|<CLID::MCS-7822-SERVER-Cluster><NID::172.16.240.124><CT::1,100,50,1.40685>
<IP::172.16.15.129><DEV::>
**01/24/2009 18:45:36.313 Cisco CallManager|MGCPpn9d - Backhaul link OPEN for
Devicename S0/SU2/ds1-0@AV-2620-4|<CLID::MCS 7822-SERVER-Cluster>
<NID::172.16.240.124><CT::1,100,50,1.40684><IP::172.16.15.129><DEV::>
01/24/2009 18:45:36.363 Cisco CallManager|ProcessDb - Dn = 8.XXXX, Line = 0,
Display= , RouteThisPattern, NetworkLocation = OffNet,
DigitDiscardingInstruction = 0, WhereClause =|<CLID::MCS-7822-SERVER-
Cluster><NID::172.16.240.124><CT::1,100,58,8.1><IP::><DEV::>
01/24/2009 18:45:36.363 Cisco CallManager|ProcessDb - Dn = 9. @, Line = 0,
Display = , RouteThisPattern, NetworkLocation = OffNet,
DigitDiscardingInstruction = 0, WhereClause = |<CLID::MCS-7822-SERVER-
Cluster><NID::172.16.240.124><CT::1,100,58,8.1><IP::><DEV::>
01/24/2009 18:45:36.373 Cisco CallManager|-->RISCMAccess::DeviceRegister(...)
|<CLID::MCS-7822-SERVER-Cluster><NID::172.16.240.124>
01/24/2009 18:45:36.373 Cisco CallManager|Device Register deviceName :
S0/SU2/ds1-0@AV-2620-4, IPAdress : 172.16.15.129, DeviceType : 121|
<CLID::MCS-7822-SERVER-Cluster><NID::172.16.240.124>
01/24/2009 18:45:36.373 Cisco CallManager|<--RISCMAccess::DeviceRegister(...)
|<CLID::MCS-7822-SERVER-Cluster><NID::172.16.240.124>
01/24/2009 18:45:36.373 **Cisco CallManager|Digit analysis: Add local pattern
/8.XXXX , PID: 1,58,8|<CLID::MCS-7822-SERVER-Cluster><NID::172.16.240.124>
<CT::1,100,58,8.1><IP::><DEV::>
01/24/2009 18:45:36.383 **Cisco CallManager|Digit analysis: Add local pattern
/9.@ , PID:1,58,8|<CLID::MCS-7822-SERVER-Cluster><NID::172.16.240.124>
<CT::1,100,58,8.1><IP::><DEV::>
01/24/2009 18:45:36.573 Cisco CallManager|MGCPpn9d - Backhaul link OPEN for
Devicename S0/SU2/ds1-0@AV-2620-4|<CLID::MCS-7822-SERVER-Cluster>
<NID::172.16.240.124><CT::1,100,58,8.1><IP::><DEV::>
01/24/2009 18:45:36.573 Cisco CallManager|MGCPHandler send MSG SUCCESSFULLY
to: 172.16.15.129 AUPEP 302 **S0/SU2/ds1-0/1@AV-2620-4 MGCP 0.1**********

*!--- Cisco CallManager sends this message for each B channel,
!--- so you see 23 messages for the 23 B channels.*

F: X, A, I |<CLID::MCS-7822-SERVER-Cluster><NID::172.16.240.124>
<CT::1,100,58,8.1><IP::><DEV::>
01/24/2009 18:45:36.573 Cisco CallManager|MGCPHandler send MSG SUCCESSFULLY
to: 172.16.15.129 AUPEP 303 S0/SU2/ds1-0/2@AV-2620-4 MGCP 0.1 F: X, A, I
|<CLID::MCS-7822-SERVER-Cluster><NID::172.16.240.124><CT::1,100,58,8.1>
<IP::><DEV::>
01/24/2009 18:45:36.573 Cisco CallManager|MGCPHandler send MSG SUCCESSFULLY
to: 172.16.15.129 AUPEP 304 S0/SU2/ds1-0/3@AV-2620-4 MGCP 0.1 F: X, A, I

!--- You see the same messages for each channel up to channel 23.

```

|<CLID::MCS-7822-SERVER-Cluster><NID::172.16.240.124><CT::1,100,58,8.1><IP::>
<DEV::>
01/24/2009 18:45:36.583 Cisco CallManager|MGCPHandler send MSG SUCCESSFULLY
to: 172.16.15.129 AUEP 324 S0/SU2/ds1-0/23@AV-2620-4 MGCP 0.1 F: X, A, I
|<CLID::MCS-7822-SERVER-Cluster><NID::172.16.240.124><CT::1,100,58,8.1><IP::>
<DEV::>
01/24/2009 18:45:36.633 Cisco CallManager|MGCPHandler received MSG from:
172.16.15.129

```

Cisco CallManager receives these messages from Gateway for each B channel. These are the port capabilities of the gateway.

Here are some of the basic definitions:

- ACK(I: ConnID
- X: ReqID
- L: LocalConnOpt(p: PktPeriod,
- a: CmprAlg,
- b: Bandwidth,
- e: EchoCancel,
- gc:GainControl,
- s: SilenceSupp,
- t: TypeOfService,
- r: ResourceResv,
- nt:TypeOfNetwork,
- v: EventPackages)
- M: sendonly, recvonly, sendrecv, inactive, loopback, conttest, netwloop netwtest)

```

200 302
L: p:10-20, a:PCMU;PCMA, b:64, e:on, gc:-6-14, s:on, t:00-FF, r:g, NT:IN;LOCAL,
v:L;G;D;T;H
L: p:10-220, a:G.729a;G.729b;G.729, b:8, e:on, gc:-6-14, s:on, t:00-FF, r:g,
NT:IN;LOCAL, v:L;G;D;T;H
L: p:10-110, a:G.726-16, b:16, e:on, gc:-6-14, s:on, t:00-FF, r:g, NT:IN;LOCAL,
v:L;G;D;T;H
L: p:10-70, a:G.726-24, b:24, e:on, gc:-6-14, s:on, t:00-FF, r:g, NT:IN;LOCAL,
v:L;G;D;T;H
L: p:10-50, a:G.726-32, b:32, e:on, gc:-6-14, s:on, t:00-FF, r:g, NT:IN;LOCAL,
v:L;G;D;T;H
M: sendonly, recvonly, sendrecv, inactive, loopback, conttest, netwloop, netwtest
|<CLID::MCS-7822-SERVER-Cluster><NID::172.16.240.124><CT::1,100,50,1.40686>
<IP::172.16.15.129><DEV::>
01/24/2009 18:45:36.633 Cisco CallManager|MGCPHandler received RESP header w/
transId= 302|<CLID::MCS-7822-SERVER-Cluster><NID::172.16.240.124>
<CT::1,100,50,1.40686><IP::172.16.15.129><DEV::>
01/24/2009 18:45:36.633 Cisco CallManager|<CLID::MCS-7822-SERVER-Cluster>
<NID::172.16.240.124><CT::1,100,50,1.40686><MN::MGCPendPoint>
<MV::S0/SU2/ds1-0/1@AV-2620-4><DEV::S0/SU2/ds1-0@AV-2620-4>
01/24/2009 18:45:36.633 Cisco CallManager|MGCPHandler received RESP header w/
transId= 302 FOUND a match for AUED|<CLID::MCS-7822-SERVER-Cluster>
<NID::172.16.240.124><CT::1,100,50,1.40686><IP::172.16.15.129>
<DEV::S0/SU2/ds1-0@AV-2620-4>
01/24/2009 18:45:36.663 Cisco CallManager|MGCPHandler received MSG from:
172.16.15.129

```

```

200 303
L: p:10-20, a:PCMU;PCMA, b:64, e:on, gc:-6-14, s:on, t:00-FF, r:g, NT:IN;LOCAL,
v:L;G;D;T;H
L: p:10-220, a:G.729a;G.729b;G.729, b:8, e:on, gc:-6-14, s:on, t:00-FF, r:g,
NT:IN;LOCAL, v:L;G;D;T;H

```


L: p:10-110, a:G.726-16, b:16, e:on, gc:-6-14, s:on, t:00-FF, r:g, NT:IN;LOCAL, v:L;G;D;T;H
L: p:10-70, a:G.726-24, b:24, e:on, gc:-6-14, s:on, t:00-FF, r:g, NT:IN;LOCAL, v:L;G;D;T;H
L: p:10-50, a:G.726-32, b:32, e:on, gc:-6-14, s:on, t:00-FF, r:g, NT:IN;LOCAL, v:L;G;D;T;H
M: sendonly, recvonly, sendrecv, inactive, loopback, conttest, netwloop, netwtest
|<CLID::MCS-7822-SERVER-Cluster><NID::172.16.240.124><CT::1,100,50,1.40687>
<IP::172.16.15.129><DEV::>
01/24/2009 18:45:36.663 Cisco CallManager|MGCPHandler received RESP header w/
transId= 303|<CLID::MCS-7822-SERVER-Cluster><NID::172.16.240.124>
<CT::1,100,50,1.40687><IP::172.16.15.129><DEV::>
01/24/2009 18:45:36.663 Cisco CallManager|<CLID::MCS-7822-SERVER-Cluster>
<NID::172.16.240.124><CT::1,100,50,1.40687><MN::MGCP endPoint>
<MV::S0/SU2/ds1-0/2@AV-2620-4><DEV::S0/SU2/ds1-0@AV-2620-4>
01/24/2009 18:45:36.663 Cisco CallManager|MGCPHandler received RESP header w/
transId= 303 FOUND a match for AUED|<CLID::MCS-7822-SERVER-Cluster>
<NID::172.16.240.124><CT::1,100,50,1.40687><IP::172.16.15.129>
<DEV::S0/SU2/ds1-0@AV-2620-4>
01/24/2009 18:45:36.703 Cisco CallManager|MGCPHandler received MSG from:
172.16.15.129

!-- You see the same message repeated for each channel.

01/24/2009 18:45:37.474 Cisco CallManager|MGCPp9d:restart0_MGCPDlEstablishConf -
Datalink or D-Channel has been established. DeviceName = S0/SU2/ds1-0@AV-2620-4|
<CLID::MCS-7822-SERVER-Cluster><NID::172.16.240.124><CT::1,100,48,1.271>
<IP::172.16.15.129><DEV::>
01/24/2009 18:45:37.474 Cisco CallManager|DchannelInService: deviceName =
S0/SU2/ds1-0@AV-2620-4, channelId = 24|<CLID::MCS-7822-SERVER-Cluster>
<NID::172.16.240.124>

01/24/2009 18:45:38.486 Cisco CallManager|MGCPp9d:restart0_StatusPoll - **Port**
Status for S0/SU2/ds1-0@AV-2620-4 1-8=66666666 9-16=66666666 17-24=66666669
25-32=77777777|<CLID::MCS-7822-SERVER-Cluster><NID::172.16.240.124>
<CT::1,100,48,1.271><IP::172.16.15.129><DEV::>
01/24/2009 18:45:41.490 Cisco CallManager| |<CLID::MCS-7822-SERVER-Cluster>
<NID::172.16.240.124>
01/24/2009 18:45:41.490 Cisco CallManager|**Out Message -- PriRestartMsg --**
Protocol=PriNi2Protocol|<CLID::MCS-7822-SERVER-Cluster><NID::172.16.240.124>
01/24/2009 18:45:41.490 Cisco CallManager|**Ie - Q931ChannelIdIe IEData= 18 03**
A9 83 81|<CLID::MCS-7822-SERVER-Cluster><NID::172.16.240.124>
01/24/2009 18:45:41.490 Cisco CallManager|**Ie - Q931RestartIndIe IEData= 79 01**
80|<CLID::MCS-7822-SERVER-Cluster><NID::172.16.240.124>
01/24/2009 18:45:41.490 Cisco CallManager|MMan_Id= 0. (iep= 0 dsl= 100 sapi=
0 ces= 0 IpAddr=810f10ac IpPort=2427)|<CLID::MCS-7822-SERVER-Cluster>
<NID::172.16.240.124>
01/24/2009 18:45:41.490 Cisco CallManager|IsdnMsgData2= 08 02 00 00 46 18 03
A9 83 81 79 01 80

01/24/2009 18:45:41.520 Cisco CallManager| |<CLID::MCS-7822-SERVER-Cluster>
<NID::172.16.240.124>
01/24/2009 18:45:41.520 Cisco CallManager|**In Message --**
PriRestartAcknowledgeMsg -- Protocol= PriNi2Protocol|<CLID::MCS-7822-SERVER-
Cluster><NID::172.16.240.124>
01/24/2009 18:45:41.520
Cisco CallManager|Ie - Q931ChannelIdIe -- IEData= 18
03 A9 83 81|<CLID::MCS-7822-SERVER-Cluster><NID::172.16.240.124>
01/24/2009 18:45:41.520 Cisco CallManager|**Ie - Q931RestartIndIe -- IEData= 79**
01 80|<CLID::MCS-7822-SERVER-Cluster><NID::172.16.240.124>
01/24/2009 18:45:41.520 Cisco CallManager|MMan_Id= 0. (iep= 0 dsl= 100 sapi=
0 ces= 0 IpAddr=810f10ac IpPort=2427)|<CLID::MCS-7822-SERVER-Cluster>
<NID::172.16.240.124>
01/24/2009 18:45:41.520 Cisco CallManager|**IsdnMsgData1= 08 02 80 00 4E 18 03**
A9 83 81 79 01 80 |<CLID::MCS-7822-SERVER-Cluster><NID::172.16.240.124>

Cisco CallManager restarts each channel, and gets ACK from the Gateway.

Verify

Use this section to confirm that your configuration works properly.

To verify the configuration, make outbound calls to PSTN, and inbound calls from PSTN to Cisco IP phones. Here is the debug output from inbound and outbound calls:

Debug Output for Outbound Calls from IP Phone to PSTN

Cisco CallManager Trace

A Cisco IP Phone with the Directory number 2000 calls a PSTN phone with number 2012. This test uses a 4-digit number for the PSTN phone. However, keep in mind that outside of lab, PSTN phones have a fully qualified North American Numbering Plan (NANP). The access code for the outside line is 8.

```
01/24/2009 19:05:40.073 Cisco CallManager|StationInit: 4b16420 KeypadButton
kpButton=8. |<CLID::MCS-7822-SERVER Cluster><NID::172.16.240.124>
<CT::1,100,95,1.102423><IP::172.16.240.126><DEV::SEP003094C2856E>
01/24/2009 19:05:40.073 Cisco CallManager|StationD: 4b16420 StopTone.
|<CLID::MCS-7822-SERVER-Cluster><NID::172.16.240.124><CT::1,100,95,1.102423>
<IP::172.16.240.126><DEV::SEP003094C2856E>
01/24/2009 19:05:40.073 Cisco CallManager|StationD: 4b16420 SelectSoftKeys
instance=1 reference=16777368 softKeySetIndex=6 validKeyMask=-1. |<CLID::MCS-
7822-SERVER- Cluster><NID::172.16.240.124><CT::1,100,95,1.102423>
<IP::172.16.240.126><DEV::SEP003094C2856E>
01/24/2009 19:05:40.073 Cisco CallManager|Digit analysis: match(fqcn="2000",
cn="2000", pss="", dd="8") |<CLID::MCS-7822-SERVER-Cluster>
<NID::172.16.240.124><CT::1,100,95,1.102423><IP::172.16.240.126>
<DEV::SEP003094C2856E>
01/24/2009 19:05:40.073 Cisco CallManager|Digit analysis:
potentialMatches=ExclusivelyOffnetPotentialMatchesExist |<CLID::MCS-7822-
SERVER-Cluster><NID::172.16.240.124><CT::1,100,95,1.102423>
<IP::172.16.240.126><DEV::SEP003094C2856E>
01/24/2009 19:05:40.073 Cisco CallManager|<CLID::MCS-7822-SERVER-
Cluster><NID::172.16.240.124><CT::1,100,95,1.102423><MN::Directory Number>
<MV::2000><DEV::SEP003094C2856E>
01/24/2009 19:05:40.073 Cisco CallManager|StationD: 4b16420 StartTone
tone=34(OutsideDialTone). |<CLID::MCS-7822-SERVER-Cluster>
<NID::172.16.240.124><CT::1,100,95,1.102423><IP::172.16.240.126>
<DEV::SEP003094C2856E>
01/24/2009 19:05:41.545 Cisco CallManager|StationInit: 4b16420 KeypadButton
kpButton=2. |<CLID::MCS-7822-SERVER-Cluster><NID::172.16.240.124>
<CT::1,100,95,1.102425><IP::172.16.240.126><DEV::SEP003094C2856E>
01/24/2009 19:05:41.555 Cisco CallManager|StationD: 4b16420 StopTone.
|<CLID::MCS-7822-SERVER-Cluster><NID::172.16.240.124><CT::1,100,95,1.102425>
<IP::172.16.240.126><DEV::SEP003094C2856E>
01/24/2009 19:05:41.555 Cisco CallManager|StationD: 4b16420 SelectSoftKeys
instance=1 reference=16777368 softKeySetIndex=6 validKeyMask=-1. |<CLID::MCS-
7822-SERVER-Cluster><NID::172.16.240.124><CT::1,100,95,1.102425><IP::172.16.
240.126><DEV::SEP003094C2856E>
01/24/2009 19:05:41.555 Cisco CallManager|Digit analysis: match(fqcn="2000",
cn="2000", pss="", DD="82") |<CLID::MCS-7822-SERVER-Cluster>
<NID::172.16.240.124><CT::1,100,95,1.102425><IP::172.16.240.126>
<DEV::SEP003094C2856E>
01/24/2009 19:05:41.555 Cisco CallManager|Digit analysis:
potentialMatches=ExclusivelyOffnetPotentialMatchesExist |<CLID::MCS-7822-
SERVER-Cluster><NID::172.16.240.124><CT::1,100,95,1.102425>
<IP::172.16.240.126><DEV::SEP003094C2856E>
01/24/2009 19:05:42.106 Cisco CallManager|StationInit: 4b16420 KeypadButton
kpButton=0. |<CLID::MCS-7822-SERVER-Cluster><NID::172.16.240.124><CT::1,100,
```

95,1.102426><IP::172.16.240.126><DEV::SEP003094C2856E>
01/24/2009 19:05:42.116 Cisco CallManager|Digit analysis: match(fqcn="2000",
cn="2000", pss="", DD="820")|<CLID::MCS-7822-SERVER-Cluster>
<NID::172.16.240.124><CT::1,100,95,1.102426><IP::172.16.240.126>
<DEV::SEP003094C2856E>
01/24/2009 19:05:42.116 Cisco CallManager|Digit analysis:
potentialMatches=ExclusivelyOffnetPotentialMatchesExist|<CLID::MCS-7822-
SERVER-Cluster><NID::172.16.240.124><CT::1,100,95,1.102426>
<IP::172.16.240.126><DEV::SEP003094C2856E>
01/24/2009 19:05:42.687 Cisco CallManager|StationInit: 4b16420 KeypadButton
kpButton=1.|<CLID::MCS-7822-SERVER-Cluster><NID::172.16.240.124><CT::1,100,
95,1.102428><IP::172.16.240.126><DEV::SEP003094C2856E>
01/24/2009 19:05:42.697 Cisco CallManager|Digit analysis: match(fqcn="2000",
cn="2000", pss="", DD="8201")|<CLID::MCS-7822-SERVER-Cluster>
<NID::172.16.240.124><CT::1,100,95,1.102428><IP::172.16.240.126>
<DEV::SEP003094C2856E>
01/24/2009 19:05:42.697 Cisco CallManager|Digit analysis:
potentialMatches=ExclusivelyOffnetPotentialMatchesExist|<CLID::MCS-7822-
SERVER-Cluster><NID::172.16.240.124><CT::1,100,95,1.102428>
<IP::172.16.240.126><DEV::SEP003094C2856E>
01/24/2009 19:05:43.208 Cisco CallManager|StationInit: 4b16420 KeypadButton
kpButton=2.|<CLID::MCS-7822-SERVER-Cluster><NID::172.16.240.124><CT::1,100,
95,1.102429><IP::172.16.240.126><DEV::SEP003094C2856E>
01/24/2009 19:05:43.208 Cisco CallManager|Digit analysis: match(fqcn="2000",
cn="2000", pss="", DD="82012")|<CLID::MCS-7822-SERVER-Cluster>
<NID::172.16.240.124><CT::1,100,95,1.102429><IP::172.16.240.126>
<DEV::SEP003094C2856E>
01/24/2009 19:05:43.208 Cisco CallManager|Digit analysis: analysis results|
<CLID::MCS-7822-SERVER-Cluster><NID::172.16.240.124><CT::1,100,95,1.102429>
<IP::172.16.240.126><DEV::SEP003094C2856E>
01/24/2009 19:05:43.218 Cisco CallManager|
|PretransformCallingPartyNumber=2000
|CallingPartyNumber=2000
|DialingPartition=
|DialingPattern=8.XXXX
|DialingRoutePatternRegularExpression=(8)(XXXX)
|DialingWhere=
|PatternType=Enterprise
|PotentialMatches=NoPotentialMatchesExist
|DialingSdlProcessId=(1,58,8)
|PretransformDigitString=82012
|PretransformTagsList=ACCESS-CODE:SUBSCRIBER
|PretransformPositionalMatchList=8:2012
|CollectedDigits=82012
|UnconsumedDigits=
|TagsList=ACCESS-CODE:SUBSCRIBER
|PositionalMatchList=8:2012
|VoiceMailbox=
|DisplayName=
|RouteBlockFlag=RouteThisPattern
|InterceptPartition=
|InterceptPattern=
|InterceptWhere=
|InterceptSdlProcessId=(0,0,0)
|InterceptSsType=0
|InterceptSsKey=0|<CLID::MCS-7822-SERVER-Cluster><NID::172.16.240.124><CT::1,
100,95,1.102429><IP::172.16.240.126><DEV::SEP003094C2856E>
01/24/2009 19:05:43.218 Cisco CallManager|MGCPpn9d:restart0_CcSetupReq - S1/DS1-
0@AV-2620-4 My Region=Default, Other Side Region=Default|<CLID::MCS-7822-
SERVER-Cluster><NID::172.16.240.124><CT::1,100,95,1.102429><IP::172.16.240.126>
<DEV::SEP003094C2856E>
01/24/2009 19:05:43.218 Cisco CallManager|Locations: reserve: cdccPID=(1.13.77)
Orig=Dest=0 no need to reserve bw.|<CLID::MCS-7822-SERVER-Cluster><NID::172.16.
240.124>
01/24/2009 19:05:43.218 Cisco CallManager|MGCPpn9d - initPortInfo: portInfo[22]
endpoint=S0/SU2/ds1-0/23@AV-2620-4, ci=16777369|<CLID::MCS-7822-SERVER-

Cluster><NID::172.16.240.124><CT::1,100,95,1.102429><IP::172.16.240.126>
<DEV::SEP003094C2856E>
01/24/2009 19:05:43.218 Cisco CallManager|<CLID::MCS-7822-SERVER-Cluster>
<NID::172.16.240.124><CT::1,100,95,1.102429><MN::Directory Number>
<MV::2000><DEV::SEP003094C2856E>
01/24/2009 19:05:43.218 Cisco CallManager|StationD: 4b16420 SelectSoftKeys
instance=1 reference=16777368 softKeySetIndex=8 validKeyMask=-1.|<CLID::MCS-7822-
SERVER-Cluster><NID::172.16.240.124><CT::1,100,95,1.102429><IP::172.16.240.126>
<DEV::SEP003094C2856E>
01/24/2009 19:05:43.228 Cisco CallManager|MGCPHandler send msg SUCCESSFULLY to:
172.16.15.129 CRCX 325 S0/SU2/ds1-0/23@AV-2620-4 MGCP 0.1
C: D000000001000099000000000000000001
M: inactive
|<CLID::MCS-7822-SERVER-Cluster><NID::172.16.240.124><CT::1,100,95,1.102429>
<IP::172.16.240.126><DEV::SEP003094C2856E>
01/24/2009 19:05:43.268 Cisco CallManager|MGCPHandler received msg from:
172.16.15.129
200 325
I: 2

v=0

c=IN IP4 172.16.15.129

m=audio 16526 RTP/AVP 0 8 96 97 98 2 99 18

a=rtpmap:96 G.729a/8000/1

a=rtpmap:97 G.726-16/8000/1

a=rtpmap:98 G.726-24/8000/1

a=rtpmap:99 G.729b/8000/1

|<CLID::MCS-7822-SERVER-Cluster><NID::172.16.240.124><CT::1,100,50,1.40789>
<IP::172.16.15.129><DEV::>
01/24/2009 19:05:43.268 Cisco CallManager|MGCPHandler received RESP header
w/ transId= 325|<CLID::MCS-7822-SERVER-Cluster><NID::172.16.240.124><CT::1,
100,50,1.40789><IP::172.16.15.129><DEV::>
01/24/2009 19:05:43.278 Cisco CallManager|<CLID::MCS-7822-SERVER-
Cluster><NID::172.16.240.124><CT::1,100,50,1.40789><MN::MGCP endPoint>
<MV::S0/SU2/ds1-0/23@AV-2620-4><DEV::S0/SU2/ds1-0@AV-2620-4>
01/24/2009 19:05:43.278 Cisco CallManager|MGCPHandler received RESP header
w/ transId= 325 FOUND a match for CRCX|<CLID::MCS-7822-SERVER-Cluster>
<NID::172.16.240.124><CT::1,100,50,1.40789><IP::172.16.15.129>
<DEV::S0/SU2/ds1-0@AV-2620-4>
01/24/2009 19:05:43.278 Cisco CallManager|MGCPHandler recv CRCX Ack with
RTP PortNum: 16526|<CLID::MCS-7822-SERVER-Cluster><NID::172.16.240.124>
<CT::1,100,50,1.40789><IP::172.16.15.129><DEV::S0/SU2/ds1-0@AV-2620-4>
01/24/2009 19:05:43.278 Cisco CallManager||<CLID::MCS-7822-SERVER-Cluster>
<NID::172.16.240.124>
01/24/2009 19:05:43.278 Cisco CallManager|Out Message -- PriSetupMsg --
Protocol=PriNi2Protocol|<CLID::MCS-7822-SERVER-Cluster><NID::172.16.240.124>
01/24/2009 19:05:43.278 Cisco CallManager|**Ie - Ni2BearerCapabilityIe IEData=**
04 03 80 90 A2 |<CLID::MCS-7822-SERVER-Cluster><NID::172.16.240.124>
01/24/2009 19:05:43.278 Cisco CallManager|**Ie - Q931ChannelIdIe IEData= 18 03 A9**
83 97 |<CLID::MCS-7822-SERVER-Cluster><NID::172.16.240.124>

01/24/2009 19:05:43.278 Cisco CallManager|**Ie - Q931CallingPartyIe IEData= 6C 06**
00 80 32 30 30 30 |<CLID::MCS-7822-SERVER-Cluster><NID::172.16.240.124>
01/24/2009 19:05:43.278 Cisco CallManager|**Ie - Q931CalledPartyIe IEData= 70 06**
80 38 32 30 31 32 |<CLID::MCS-7822-SERVER-Cluster><NID::172.16.240.124>
01/24/2009 19:05:43.278 Cisco CallManager|MMan_Id= 0. (iep= 0 dsl= 100 sapi= 0
ces= 0 IpAddr=810f10ac IpPort=2427)|<CLID::MCS-7822-SERVER-Cluster><NID::172.16.
240.124>

01/24/2009 19:05:43.278 Cisco CallManager|IsdnMsgData2= 08 02 00 01 05 04 03 80
90 A2 18 03 A9 83 97 6C 06 00 80 32 30 30 30 70 06 80 38 32 30 31 32
|<CLID::MCS-7822-SERVER-Cluster><NID::172.16.240.124>
01/24/2009 19:05:43.278 Cisco CallManager|MGCPBhHandler - Sending BhHdr: 0004
0000 0010 0100 0001 001f |<CLID::MCS-7822-SERVER-Cluster><NID::172.16.240.124>
<CT::1,100,95,1.102429><IP::172.16.240.126><DEV::SEP003094C2856E>
01/24/2009 19:05:43.328 Cisco CallManager|MGCPBhHandler 172.16.15.129 - TCP msg
available from Device|<CLID::MCS-7822-SERVER-Cluster><NID::172.16.240.124>
<CT::1,100,48,1.295><IP::172.16.15.129><DEV::>
01/24/2009 19:05:43.328 Cisco CallManager|MGCPBhHandler - Receiving BhHdr: 0004
0000 0011 0100 0001 000a |<CLID::MCS-7822-SERVER-Cluster><NID::172.16.240.124>
<CT::1,100,48,1.295><IP::172.16.15.129><DEV::>
01/24/2009 19:05:43.328 Cisco CallManager| |<CLID::MCS-7822-SERVER-Cluster>
<NID::172.16.240.124>
01/24/2009 19:05:43.328 Cisco **CallManager|In Message -- PriCallProceedingMsg --**
Protocol= PriNi2Protocol|<CLID::MCS-7822-SERVER-Cluster><NID::172.16.240.124>
01/24/2009 19:05:43.328 Cisco CallManager|Ie - Q931ChannelIdIe -- IEData= 18 03
A9 83 17 |<CLID::MCS-7822-SERVER-Cluster><NID::172.16.240.124>
01/24/2009 19:05:43.328 Cisco CallManager|MMan_Id= 0. (iep= 0 dsl= 100 sapi= 0
ces= 0 IpAddr=810f10ac IpPort=2427)|<CLID::MCS-7822-SERVER-Cluster><NID::172.16.
240.124>
01/24/2009 19:05:43.328 Cisco CallManager|IsdnMsgData1= 08 02 80 01 02 18 03 A9
83 17 |<CLID::MCS-7822-SERVER-Cluster><NID::172.16.240.124>
01/24/2009 19:05:43.328 Cisco **CallManager|ConnectionManager -**
wait_AuConnectRequest(16777368,16777369): INFORM MEDIA LAYER|<CLID::MCS-7822-
SERVER-Cluster><NID::172.16.240.124><CT::1,100,48,1.295><IP::172.16.15.129>
<DEV::>
01/24/2009 19:05:43.328 Cisco CallManager|ConnectionManager -
storeMediaInfo(16777368):ADD NEW ENTRY, tail == 1|<CLID::MCS-7822-SERVER-
Cluster><NID::172.16.240.124><CT::1,100,48,1.295><IP::172.16.15.129><DEV::>
01/24/2009 19:05:43.328 Cisco CallManager|ConnectionManager -
storeMediaInfo(16777369):ADD NEW ENTRY, tail == 2|<CLID::MCS-7822-SERVER-
Cluster><NID::172.16.240.124><CT::1,100,48,1.295><IP::172.16.15.129><DEV::>
01/24/2009 19:05:43.328 Cisco CallManager|MediaCoordinator -
wait_AuConnectRequest()
|<CLID::MCS-7822-SERVER-Cluster><NID::172.16.240.124><CT::1,100,48,1.295>
<IP::172.16.15.129><DEV::>
01/24/2009 19:05:43.338 Cisco CallManager|MediaCoordinator -
wait_AuConnectRequest - starting MediaManager w/ existing (0) connections
|<CLID::MCS-7822-SERVER-Cluster><NID::172.16.240.124><CT::1,100,48,1.295>
<IP::172.16.15.129><DEV::>
01/24/2009 19:05:43.338 Cisco CallManager|MediaCoordinator -
wait_AuConnectRequest - new MediaManager(40,25) started|<CLID::MCS-7822-
SERVER-Cluster><NID::172.16.240.124><CT::1,100,48,1.295><IP::172.16.15.129>
<DEV::>
01/24/2009 19:05:43.338 Cisco CallManager|MediaManager(25) started
|<CLID::MCS-7822-SERVER-Cluster><NID::172.16.240.124><CT::1,100,40,25.1>
<IP::><DEV::>
01/24/2009 19:05:43.338 Cisco CallManager|MediaManager - wait_AuConnectRequest|
<CLID::MCS-7822-SERVER-Cluster><NID::172.16.240.124><CT::1,100,48,1.295>
<IP::172.16.15.129><DEV::>
01/24/2009 19:05:43.338 Cisco CallManager|MediaManager -
wait_AuConnectRequest - normal connection|<CLID::MCS-7822-SERVER-Cluster>
<NID::172.16.240.124><CT::1,100,48,1.295><IP::172.16.15.129><DEV::>
01/24/2009 19:05:43.338 Cisco CallManager|StationD: 4b16420
CallState callState=12(Proceed) lineInstance=1 callReference=16777368
|<CLID::MCS-7822-SERVER-Cluster><NID::172.16.240.124><CT::1,100,48,1.295>
<IP::172.16.15.129><DEV::>
01/24/2009 19:05:43.338 Cisco CallManager|StationD: 4b16420 **CallInfo**
callingPartyName=' callingParty=2000 cgnVoiceMailbox=2000 calledPartyName='
calledParty=82012 cdpnVoiceMailbox= originalCalledPartyName='
originalCalledParty=82012 originalCdpnVoiceMailbox= originalCdpnRedirectReason=0
lastRedirectingPartyName=''lastRedirectingParty= lastRedirectingVoiceMailbox=
lastRedirectingReason=0 callType=2(OutBound) lineInstance=1
callReference=16777368. |<CLID::MCS-7822-SERVER-Cluster><NID::172.16.240.124>
<CT::1,100,48,1.295><IP::172.16.15.129><DEV::>

01/24/2009 19:05:43.338 Cisco CallManager|StationD::star_StationOutputCallInfo()
:callInfo: CI=16777368, CallingPartyName=, CallingParty=2000, CalledPartyName=,
CalledParty=82012, OriginalCalledPartyName=, OriginalCalledParty=82012,
lastRedirectingPartyName=, lastRedirectingParty=|<CLID::MCS-7822-SERVER-
Cluster><NID::172.16.240.124><CT::1,100,48,1.295><IP::172.16.15.129><DEV::>
01/24/2009 19:05:43.338 Cisco CallManager|StationD: 4b16420 DialedNumber
dialedNumber=82012 lineInstance=1 callReference=16777368.|<CLID::MCS-7822-
SERVER-Cluster><NID::172.16.240.124><CT::1,100,48,1.295><IP::172.16.15.129>
<DEV::>
01/24/2009 19:05:43.378 Cisco CallManager|MediaManager - wait_AuConnectReply
|<CLID::MCS-7822-SERVER-Cluster><NID::172.16.240.124><CT::1,100,52,22.1><IP::>
<DEV::>
01/24/2009 19:05:43.378 Cisco CallManager|MediaManager - wait_AuConnectReply -
received 1 responses, forwarding reply for party1(16777368) and party2(16777369)
|<CLID::MCS-7822-SERVER-Cluster><NID::172.16.240.124><CT::1,100,52,22.1><IP::>
<DEV::>
01/24/2009 19:05:43.378 Cisco CallManager|MediaCoordinator - wait_AuConnectReply
|<CLID::MCS-7822-SERVER-Cluster><NID::172.16.240.124><CT::1,100,52,22.1><IP::>
<DEV::>
01/24/2009 19:05:43.378 Cisco CallManager|ConnectionManager - wait_AuConnectReply
(16777368,16777369)|<CLID::MCS-7822-SERVER-Cluster><NID::172.16.240.124>
<CT::1,100,52,22.1><IP::><DEV::>
01/24/2009 19:05:43.378 Cisco CallManager|StationD: 4b16420 StopTone.
|<CLID::MCS-7822-SERVER-Cluster><NID::172.16.240.124><CT::1,100,8,26.1><IP::>
<DEV::>
01/24/2009 19:05:43.378 Cisco CallManager|StationD: 4b16420 **OpenReceiveChannel**
conferenceID=0 passThruPartyID=417 millisecondPacketSize=20 compressionType=4
(Media_Payload_G711Ululaw64k) qualifierIn=? myIP: 7ef010ac (172.16.240.126)
|<CLID::MCS-7822- SERVER-Cluster><NID::172.16.240.124><CT::1,100,8,26.1><IP::>
<DEV::>
01/24/2009 19:05:43.378 Cisco CallManager|MGCPHandler send msg SUCCESSFULLY to:
172.16.15.129
MDCX 326 s0/SU2/ds1-0/23@AV-2620-4 MGCP 0.1
C: D000000001000099000000000000000001
I: 2
X: 17
L: p:20, a:PCMU, s:off
M: rcvonly
R: D/[0-9ABCD*#]
Q: process,loop
|<CLID::MCS-7822-SERVER-Cluster><NID::172.16.240.124><CT::1,100,52,22.1><IP::>
<DEV::>
01/24/2009 19:05:43.388 Cisco CallManager|MGCPBhHandler 172.16.15.129 - TCP msg
available from Device|<CLID::MCS-7822-SERVER-Cluster><NID::172.16.240.124>
<CT::1,100,48,1.296><IP::172.16.15.129><DEV::>
01/24/2009 19:05:43.388 Cisco CallManager|MGCPBhHandler - Receiving BhHdr: 0004
0000 0011 0100 0001 0005|<CLID::MCS-7822-SERVER-Cluster><NID::172.16.240.124>
<CT::1,100,48,1.296><IP::172.16.15.129><DEV::>
01/24/2009 19:05:43.388 Cisco CallManager| |<CLID::MCS-7822-SERVER-Cluster>
<NID::172.16.240.124>
01/24/2009 19:05:43.388 Cisco CallManager|In Message -- PriAlertingMsg --
Protocol= PriNi2Protocol|<CLID::MCS-7822-SERVER-Cluster><NID::172.16.240.124>
01/24/2009 19:05:43.388 Cisco CallManager|MMan_Id= 0. (iep= 0 dsl= 100 sapi= 0
ces= 0 IpAddr=810f10ac IpPort=2427)|<CLID::MCS-7822-SERVER-Cluster>
<NID::172.16.240.124>
01/24/2009 19:05:43.388 Cisco CallManager|IsdnMsgData1= 08 02 80 01 01
|<CLID::MCS-7822-SERVER-Cluster><NID::172.16.240.124>
01/24/2009 19:05:43.388 Cisco CallManager|**StationInit: 4b16420**
OpenReceiveChannelAck Status=0, IpAddr=0x7ef010ac, Port=32704, PartyID=417
|<CLID::MCS-7822-SERVER-Cluster><NID::172.16.240.124><CT::1,100,95,1.102430>
<IP::172.16.240.126><DEV::SEP003094C2856E>
01/24/2009 19:05:43.408 Cisco CallManager|MGCPHandler received msg from:
172.16.15.129
200 326 OK
|<CLID::MCS-7822-SERVER-Cluster><NID::172.16.240.124><CT::1,100,50,1.40790>
<IP::172.16.15.129><DEV::>

01/24/2009 19:05:43.408 Cisco CallManager|MGCPHandler received RESP header w/
transId= 326|<CLID::MCS-7822-SERVER-Cluster><NID::172.16.240.124>
<CT::1,100,50,1.40790><IP::172.16.15.129><DEV::>
01/24/2009 19:05:43.408 Cisco CallManager|<CLID::MCS-7822-SERVER-Cluster>
<NID::172.16.240.124><CT::1,100,50,1.40790><MN::MGCP endPoint>
<MV::S0/SU2/ds1-0/23@AV-2620-4><DEV::S0/SU2/ds1-0@AV-2620-4>
01/24/2009 19:05:43.408 Cisco CallManager|MGCPHandler received RESP header w/
transId= 326 FOUND a match for MDCX|<CLID::MCS-7822-SERVER-Cluster>
<NID::172.16.240.124><CT::1,100,50,1.40790><IP::172.16.15.129>
<DEV::S0/SU2/ds1-0@AV-2620-4>
01/24/2009 19:05:43.408 Cisco CallManager|MediaManager - wait_AuConnectInfo
|<CLID::MCS-7822-SERVER-Cluster><NID::172.16.240.124><CT::1,100,50,1.40790>
<IP::172.16.15.129><DEV::S0/SU2/ds1-0@AV-2620-4>
01/24/2009 19:05:43.408 Cisco CallManager|MediaManager - wait_AuConnectInfo -
received response, forwarding|<CLID::MCS-7822-SERVER-Cluster>
<NID::172.16.240.124> <CT::1,100,50,1.40790><IP::172.16.15.129>
<DEV::S0/SU2/ds1-0@AV-2620-4>
01/24/2009 19:05:43.408 Cisco CallManager|MediaCoordinator -
wait_AuConnectInfoInd|<CLID::MCS-7822-SERVER-Cluster><NID::172.16.240.124>
<CT::1,100,50,1.40790><IP::172.16.15.129><DEV::S0/SU2/ds1-0@AV-2620-4>
01/24/2009 19:05:43.408 Cisco CallManager|MGCPHandler send msg SUCCESSFULLY
to: 172.16.15.129
MDCX 327 S0/SU2/ds1-0/23@AV-2620-4 MGCP 0.1
C: D000000001000099000000000000000001
I: 2
X: 17
L: p:20, a:PCMU, s:off
M: sendrecv
R: D/[0-9ABCD*##]
S:
Q: process,loop

v=0

o=- 2 0 IN EPN S0/SU2/ds1-0/23@AV-2620-4
s=Cisco SDP 0
t=0 0
c=IN IP4 172.16.240.126
m=audio 32704 RTP/AVP 96
a=rtpmap:96 PCMU
|<CLID::MCS-7822-SERVER-Cluster><NID::172.16.240.124><CT::1,100,95,1.102430>
<IP::172.16.240.126><DEV::SEP003094C2856E>
01/24/2009 19:05:43.408 Cisco CallManager|StationD: 4b16420
StartMediaTransmission conferenceID=0 passThruPartyID=417
remoteIpAddress=810f10ac(172.16.15.129) remotePortNumber=16526
millisecondPacketSize=20 compressType=4(Media_Payload_G711Ulaw64k)
qualifierOut=?. myIP: 7ef010ac (172.16.240.126)|<CLID::MCS-7822-SERVER-Cluster>
<NID::172.16.240.124><CT::1,100,50,1.40790><IP::172.16.15.129>
<DEV::S0/SU2/ds1-0@AV-2620-4>
01/24/2009 19:05:43.418 Cisco CallManager|Locations: adjust: cdccPID=(1.13.77)
Orig=Dest=0 no entry for cdcc. No need to adjust.
|<CLID::MCS-7822-SERVER-Cluster><NID::172.16.240.124>
01/24/2009 19:05:43.418 Cisco CallManager|<CLID::MCS-7822-SERVER-Cluster>
<NID::172.16.240.124><CT::1,100,48,1.296><MN::Directory Number><MV::2000>
<DEV::>
01/24/2009 19:05:43.418 Cisco CallManager|<CLID::MCS-7822-SERVER-Cluster>
<NID::172.16.240.124><CT::1,100,48,1.296><MN::Directory Number><MV::2000>
<DEV::>
01/24/2009 19:05:43.418 Cisco CallManager|CTI:
RoutePatternToCtiCommandData::findValue() : RP=2000:,bRc=0, T=, #entries=0
|<CLID::MCS-7822-SERVER-Cluster><NID::172.16.240.124>
01/24/2009 19:05:43.418 Cisco CallManager|StationD: 4b16420 CallInfo
callingPartyName='' callingParty=2000 cgpnVoiceMailbox=2000
calledPartyName='calledParty=82012 cdpnVoiceMailbox=
originalCalledPartyName='' originalCalledParty= originalCdpnVoiceMailbox=
originalCdpnRedirectReason=0 lastRedirectingPartyName=''

lastRedirectingParty=82012 lastRedirectingVoiceMailbox= lastRedirectingReason=0
callType=2(OutBound) lineInstance=1 callReference=16777368.
|<CLID::MCS-7822-SERVER-Cluster><NID::172.16.240.124><CT::1,100,48,1.296>
<IP::172.16.15.129><DEV::>
01/24/2009 19:05:43.418 Cisco CallManager
|StationD::star_StationOutputCallInfo(): callInfo: CI=16777368,
CallingPartyName=, CallingParty=2000, CalledPartyName=, CalledParty=82012,
OriginalCalledPartyName=, OriginalCalledParty=, lastRedirectingPartyName=,
lastRedirectingParty=|<CLID::MCS-7822-SERVER-Cluster><NID::172.16.240.124>
<CT::1,100,48,1.296><IP::172.16.15.129><DEV::>
01/24/2009 19:05:43.418 Cisco **CallManager|StationD: 4b16420 CallState
callState=3(RingOut)**
lineInstance=1 callReference=16777368|<CLID::MCS-7822-SERVER-Cluster>
<NID::172.16.240.124><CT::1,100,48,1.296><IP::172.16.15.129><DEV::>
01/24/2009 19:05:43.418 Cisco CallManager|StationD: 4b16420 SelectSoftKeys
instance=1 reference=16777368 softKeySetIndex=8 validKeyMask=-1.
|<CLID::MCS-7822-SERVER-Cluster><NID::172.16.240.124><CT::1,100,48,1.296>
<IP::172.16.15.129><DEV::>
01/24/2009 19:05:43.418 Cisco CallManager|StationD: 4b16420
DisplayPromptStatus timeOutValue=0 promptStatus='Ring Out' lineInstance=1
callReference=16777368.|<CLID::MCS-7822-SERVER-Cluster><NID::172.16.240.124>
<CT::1,100,48,1.296><IP::172.16.15.129><DEV::>
01/24/2009 19:05:43.448 Cisco CallManager|MGCPHandler received msg from:
172.16.15.129
200 327 OK
|<CLID::MCS-7822-SERVER-Cluster><NID::172.16.240.124><CT::1,100,50,1.40791>
<IP::172.16.15.129><DEV::>
01/24/2009 19:05:43.448 Cisco CallManager|MGCPHandler received RESP header
w/ transId= 327|<CLID::MCS-7822-SERVER-Cluster><NID::172.16.240.124>
<CT::1,100,50,1.40791><IP::172.16.15.129><DEV::>
01/24/2009 19:05:43.448 Cisco CallManager|<CLID::MCS-7822-SERVER-Cluster>
<NID::172.16.240.124><CT::1,100,50,1.40791><MN::MGCPEndPoint>
<MV::S0/SU2/ds1-0/23@AV-2620-4><DEV::S0/SU2/ds1-0@AV-2620-4>
01/24/2009 19:05:43.448 Cisco CallManager|MGCPHandler received RESP header
w/ transId= 327 FOUND a match for MDCX|<CLID::MCS-7822-SERVER-Cluster>
<NID::172.16.240.124><CT::1,100,50,1.40791><IP::172.16.15.129>
<DEV::S0/SU2/ds1-0@AV-2620-4>
01/24/2009 19:05:46.563 Cisco CallManager|MGCPBhHandler 172.16.15.129 -
TCP msg available from Device|<CLID::MCS-7822-SERVER-Cluster>
<NID::172.16.240.124><CT::1,100,48,1.297><IP::172.16.15.129><DEV::>
01/24/2009 19:05:46.563 Cisco CallManager|MGCPBhHandler - Receiving BhHdr:
0004 0000 0011 0100 0001 0005 |<CLID::MCS-7822-SERVER-Cluster>
<NID::172.16.240.124><CT::1,100,48,1.297><IP::172.16.15.129><DEV::>
01/24/2009 19:05:46.563 Cisco CallManager| |<CLID::MCS-7822-SERVER-Cluster>
<NID::172.16.240.124>
01/24/2009 19:05:46.563 **Cisco CallManager|In Message -- PriConnectMsg --
Protocol= PriNi2Protocol**|<CLID::MCS-7822-SERVER-Cluster>
<NID::172.16.240.124>
01/24/2009 19:05:46.563 Cisco CallManager|MMan_Id= 0. (iep= 0 dsl= 100
sapi= 0 ces= 0 IpAddr=810f10ac IpPort=2427)|<CLID::MCS-7822-SERVER-Cluster>
<NID::172.16.240.124>
01/24/2009 19:05:46.563 Cisco CallManager|IsdnMsgData1= 08 02 80 01 07
|<CLID::MCS-7822-SERVER-Cluster><NID::172.16.240.124>
01/24/2009 19:05:46.563 Cisco CallManager|MGCPpn9cnet -
call_received7_PriNi2Conn SessionID=0x00000000|<CLID::MCS-7822-SERVER-
Cluster><NID::172.16.240.124><CT::1,100,48,1.297><IP::172.16.15.129><DEV::>
01/24/2009 19:05:46.573 Cisco CallManager| |<CLID::MCS-7822-SERVER-Cluster>
<NID::172.16.240.124>
01/24/2009 19:05:46.573 **Cisco CallManager|Out Message --
PriConnectAcknowledgeMsg -- Protocol= PriNi2Protocol**
|<CLID::MCS-7822-SERVER-Cluster><NID::172.16.240.124>
01/24/2009 19:05:46.573 Cisco CallManager|MMan_Id= 0. (iep= 0 dsl= 100
sapi= 0 ces= 0 IpAddr=810f10ac IpPort=2427)|<CLID::MCS-7822-SERVER-Cluster>
<NID::172.16.240.124>
01/24/2009 19:05:46.573 Cisco CallManager|IsdnMsgData2= 08 02 00 01 0F
|<CLID::MCS-7822-SERVER-Cluster><NID::172.16.240.124>

01/24/2009 19:05:46.573 Cisco CallManager|MGCPBhHandler - Sending BhHdr:
0004 0000 0010 0100 0001 0005 |<CLID::MCS-7822-SERVER-Cluster>
<NID::172.16.240.124><CT::1,100,48,1.297><IP::172.16.15.129><DEV::>
01/24/2009 19:05:46.573 Cisco CallManager|CTI:
RoutePatternToCtiCommandData::findValue() : RP=2000:, bRc=0, T=, #entries=0
|<CLID::MCS-7822-SERVER-Cluster><NID::172.16.240.124>
01/24/2009 19:05:46.573 Cisco CallManager|StationD: 4b16420 StopTone.
|<CLID::MCS-7822-SERVER-Cluster><NID::172.16.240.124><CT::1,100,48,1.297>
<IP::172.16.15.129><DEV::>
01/24/2009 19:05:46.573 Cisco CallManager|StationD: 4b16420 CallState
callState=5(Connected) lineInstance=1 callReference=16777368
|<CLID::MCS-7822-SERVER-Cluster><NID::172.16.240.124><CT::1,100,48,1.297>
<IP::172.16.15.129><DEV::>
01/24/2009 19:05:46.573 Cisco CallManager|StationD: 4b16420 CallInfo
callingPartyName='callingParty=2000 cgpnVoiceMailbox=2000
calledPartyName=' calledParty=82012 cdpnVoiceMailbox=
originalCalledPartyName=' originalCalledParty= originalCdpnVoiceMailbox=
originalCdpnRedirectReason=0
lastRedirectingPartyName=' lastRedirectingParty=82012
lastRedirectingVoiceMailbox= lastRedirectingReason=0 callType=2(OutBound)
lineInstance=1 callReference=16777368.|<CLID::MCS-7822-SERVER-Cluster>
<NID::172.16.240.124><CT::1,100,48,1.297><IP::172.16.15.129><DEV::>
01/24/2009 19:05:46.573
Cisco CallManager|StationD::star_StationOutputCallInfo():
callInfo: CI=16777368, **CallingPartyName=, CallingParty=2000,**
CalledPartyName=, CalledParty=82012, OriginalCalledPartyName=,
OriginalCalledParty=, lastRedirectingPartyName=, lastRedirectingParty=
|<CLID::MCS-7822-SERVER-Cluster><NID::172.16.240.124><CT::1,100,48,1.297>
<IP::172.16.15.129><DEV::>
01/24/2009 19:05:46.573 Cisco CallManager|StationD: 4b16420 SelectSoftKeys
instance=1 reference=16777368 softKeySetIndex=1 validKeyMask=-1.
|<CLID::MCS-7822-SERVER-Cluster><NID::172.16.240.124><CT::1,100,48,1.297>
<IP::172.16.15.129><DEV::>
01/24/2009 19:05:46.573 Cisco CallManager|StationD: 4b16420
DisplayPromptStatus timeOutValue=0 promptStatus='Connected' lineInstance=1
callReference=16777368.|<CLID::MCS-7822-SERVER-
Cluster><NID::172.16.240.124><CT::1,100,48,1.297><IP::172.16.15.129><DEV::>
01/24/2009 19:05:51.280 Cisco CallManager|MGCPHandler received msg from:
172.16.15.129
NTFY 86 *@AV-2620-4 MGCP 0.1
X: 0
O:
|<CLID::MCS-7822-SERVER-Cluster><NID::172.16.240.124><CT::1,100,50,1.40792>
<IP::172.16.15.129><DEV::>
01/24/2009 19:05:51.280 Cisco CallManager|<CLID::MCS-7822-SERVER-Cluster>
<NID::172.16.240.124><CT::1,100,50,1.40792><MN::MGCPEndPoint>
<MV::*@AV-2620-4><DEV::>
01/24/2009 19:05:51.280 Cisco CallManager|MGCPHandler send msg SUCCESSFULLY
to: 172.16.15.129
200 86
|<CLID::MCS-7822-SERVER-Cluster><NID::172.16.240.124><CT::1,100,50,1.40792>
<IP::172.16.15.129><DEV::>
01/24/2009 19:05:51.290 Cisco CallManager|MGCPManager remove recent Incoming
transId 84|<CLID::MCS-7822-SERVER-Cluster><NID::172.16.240.124>
<CT::1,100,50,1.40787><IP::172.16.15.129><DEV::>
01/24/2009 19:05:53.343 Cisco CallManager|MGCPBhHandler 172.16.15.129 - TCP
msg available from Device|<CLID::MCS-7822-SERVER-Cluster>
<NID::172.16.240.124><CT::1,100,48,1.298><IP::172.16.15.129><DEV::>
01/24/2009 19:05:53.343 Cisco CallManager|MGCPBhHandler - Receiving BhHdr:
0004 0000 0011 0100 0001 0009 |<CLID::MCS-7822-SERVER-Cluster>
<NID::172.16.240.124><CT::1,100,48,1.298><IP::172.16.15.129><DEV::>
01/24/2009 19:05:53.353 Cisco CallManager| |<CLID::MCS-7822-SERVER-Cluster>
<NID::172.16.240.124>

!--- The call was hung up.

01/24/2009 19:05:53.353 Cisco CallManager|In Message -- PriDisconnectMsg --
Protocol= PriNi2Protocol|<CLID::MCS-7822-SERVER-Cluster><NID::172.16.240.124>
01/24/2009 19:05:53.353 Cisco CallManager|Ie - Q931CauseIe -- IEData= 08 02
80 90 |<CLID::MCS-7822-SERVER-Cluster><NID::172.16.240.124>
01/24/2009 19:05:53.353 Cisco CallManager|MMan_Id= 0. (iep= 0 dsl= 100 sapi=
0 ces= 0 IpAddr=810f10ac IpPort=2427)|<CLID::MCS-7822-SERVER-Cluster>
<NID::172.16.240.124>
01/24/2009 19:05:53.353 Cisco CallManager|IsdnMsgData1= 08 02 80 01 45 08 02
80 90 |<CLID::MCS-7822-SERVER-Cluster><NID::172.16.240.124>
01/24/2009 19:05:53.363 Cisco CallManager|ConnectionManager -
wait_AuDisconnectRequest(16777369,16777368):STOP SESSION|<CLID::MCS-7822-
SERVER-Cluster><NID::172.16.240.124><CT::1,100,48,1.298><IP::172.16.15.129>
<DEV::>
01/24/2009 19:05:53.363 Cisco CallManager|ConnectionManager - storeMediaInfo
(16777369): EXISTING ENTRY DISCOVERED, tail == 2|<CLID::MCS-7822-SERVER-
Cluster><NID::172.16.240.124><CT::1,100,48,1.298><IP::172.16.15.129><DEV::>
01/24/2009 19:05:53.363 Cisco CallManager|ConnectionManager - storeMediaInfo
(16777368): EXISTING ENTRY DISCOVERED, tail == 2|<CLID::MCS-7822-SERVER-
Cluster><NID::172.16.240.124><CT::1,100,48,1.298><IP::172.16.15.129><DEV::>
01/24/2009 19:05:53.363 Cisco CallManager|MediaCoordinator -
wait_AuDisconnectRequest|<CLID::MCS-7822-SERVER-Cluster><NID::172.16.240.124>
<CT::1,100,48,1.298><IP::172.16.15.129><DEV::>
01/24/2009 19:05:53.363 Cisco CallManager|MediaCoordinator -
wait_AuDisconnectRequest - sending disconnect to MediaManager(25)
|<CLID::MCS-7822-SERVER-Cluster><NID::172.16.240.124><CT::1,100,48,1.298>
<IP::172.16.15.129><DEV::>
01/24/2009 19:05:53.363 Cisco CallManager|MediaManager -
wait_AuDisconnectRequest|<CLID::MCS-7822-SERVER-Cluster><NID::172.16.240.124>
<CT::1,100,48,1.298><IP::172.16.15.129><DEV::>
01/24/2009 19:05:53.363 Cisco CallManager|MediaManager -
wait_AuDisconnectRequest - StopSession sending disconnect to (71,25) and
remove connection from list|<CLID::MCS-7822-SERVER-Cluster>
<NID::172.16.240.124><CT::1,100,48,1.298><IP::172.16.15.129><DEV::>
01/24/2009 19:05:53.363 Cisco CallManager|StationD: 4b16420
CloseReceiveChannel conferenceID=0 passThruPartyID=417. myIP: 7ef010ac
(172.16.240.126)|<CLID::MCS-7822-SERVER-Cluster><NID::172.16.240.124>
<CT::1,100,48,1.298><IP::172.16.15.129><DEV::>
01/24/2009 19:05:53.363 Cisco CallManager|StationD: 4b16420
StopMediaTransmission conferenceID=0 passThruPartyID=417. myIP: 7ef010ac
(172.16.240.126)|<CLID::MCS-7822-SERVER-Cluster><NID::172.16.240.124>
<CT::1,100,48,1.298><IP::172.16.15.129><DEV::>
01/24/2009 19:05:53.363 Cisco CallManager|MGCPHandler send msg SUCCESSFULLY
to: 172.16.15.129
MDCX 328 S0/SU2/ds1-0/23@AV-2620-4 MGCP 0.1
C: D000000001000099000000000000000001
I: 2
X: 17
M: rcvonly
R: D/[0-9ABCD*#]
Q: process,loop
|<CLID::MCS-7822-SERVER-Cluster><NID::172.16.240.124><CT::1,100,48,1.298>
<IP::172.16.15.129><DEV::>
01/24/2009 19:05:53.403 Cisco CallManager|MGCPHandler received msg from:
172.16.15.129
200 328 OK
|<CLID::MCS-7822-SERVER-Cluster><NID::172.16.240.124><CT::1,100,50,1.40793>
<IP::172.16.15.129><DEV::>
01/24/2009 19:05:53.403 Cisco CallManager|MGCPHandler received RESP header
w/ transId= 328|<CLID::
MCS-7822-SERVER-Cluster><NID::172.16.240.124><CT::1,100,50,1.40793>
<IP::172.16.15.129><DEV::>
01/24/2009 19:05:53.403 Cisco CallManager|<CLID::MCS-7822-SERVER-Cluster>
<NID::172.16.240.124><CT::1,100,50,1.40793><MN::MGCP endPoint>

<MV::S0/SU2/ds1-0/23@AV-2620-4><DEV::S0/SU2/ds1-0@AV-2620-4>
01/24/2009 19:05:53.403 Cisco CallManager|MGCPHandler received RESP header
w/ transId= 328 FOUND a match for MDCX|<CLID::MCS-7822-SERVER-Cluster>
<NID::172.16.240.124><CT::1,100,50,1.40793><IP::172.16.15.129>
<DEV::S0/SU2/ds1-0@AV-2620-4>
01/24/2009 19:05:53.403 Cisco CallManager|MediaManager -
wait_AuDisconnectReply|<CLID::MCS-7822-SERVER-Cluster><NID::172.16.240.124>
<CT::1,100,50,1.40793><IP::172.16.15.129><DEV::S0/SU2/ds1-0@AV-2620-4>
01/24/2009 19:05:53.403 Cisco CallManager|MediaManager -
wait_AuDisconnectReply - received all disconnect replies, forwarding a
reply for party1(16777369) and party2(16777368)|<CLID::MCS-7822-SERVER-
Cluster><NID::172.16.240.124><CT::1,100,50,1.40793><IP::172.16.15.129>
<DEV::S0/SU2/ds1-0@AV-2620-4>
01/24/2009 19:05:53.403 Cisco CallManager|MediaCoordinator -
wait_AuDisconnectReply|<CLID::MCS-7822-SERVER-Cluster>
<NID::172.16.240.124><CT::1,100,50,1.40793><IP::172.16.15.129>
<DEV::S0/SU2/ds1-0@AV-2620-4>
01/24/2009 19:05:53.403 Cisco CallManager|MediaCoordinator -
wait_AuDisconnectReply - removing MediaManager(25) from connection list
|<CLID::MCS-7822-SERVER-Cluster><NID::172.16.240.124><CT::1,100,50,1.40793>
<IP::172.16.15.129><DEV::S0/SU2/ds1-0@AV-2620-4>
01/24/2009 19:05:53.403 Cisco CallManager|ConnectionManager -
wait_AuDisconnectReply(16777369,16777368): STOP SESSION
|<CLID::MCS-7822-SERVER-Cluster><NID::172.16.240.124><CT::1,100,50,1.40793>
<IP::172.16.15.129><DEV::S0/SU2/ds1-0@AV-2620-4>
01/24/2009 19:05:53.403 Cisco CallManager|ConnectionManager -
deleteMediaInfoEntry(16777369):
ENTRY DELETED, tail == 1|<CLID::MCS-7822-SERVER-Cluster><NID::172.16.240.124>
<CT::1,100,50,1.40793><IP::172.16.15.129>
<DEV::S0/SU2/ds1-0@AV-2620-4>
01/24/2009 19:05:53.403 Cisco CallManager|ConnectionManager -
deleteMediaInfoEntry(16777368): ENTRY DELETED, tail == 0
|<CLID::MCS-7822-SERVER-Cluster><NID::172.16.240.124><CT::1,100,50,1.40793>
<IP::172.16.15.129><DEV::S0/SU2/ds1-0@AV-2620-4>
01/24/2009 19:05:53.403 Cisco CallManager| |<CLID::MCS-7822-SERVER-Cluster>
<NID::172.16.240.124>
01/24/2009 19:05:53.403 Cisco **CallManager|Out Message -- PriReleaseMsg --**
Protocol= PriNi2Protocol|<CLID::MCS-7822-SERVER-Cluster>
<NID::172.16.240.124>
01/24/2009 19:05:53.403 Cisco CallManager|MMan_Id= 0. (iep= 0 dsl= 100
sapi= 0 ces= 0 IpAddr=810f10ac IpPort=2427)|<CLID::MCS-7822-SERVER-Cluster>
<NID::172.16.240.124>
01/24/2009 19:05:53.403 Cisco CallManager|IsdnMsgData2= 08 02 00 01 4D
|<CLID::MCS-7822-SERVER-Cluster><NID::172.16.240.124>
01/24/2009 19:05:53.403 Cisco CallManager|MGCPBhHandler - Sending BhHdr:
0004 0000 0010 0100 0001 0005 |<CLID::MCS-7822-SERVER-Cluster>
<NID::172.16.240.124><CT::1,100,50,1.40793><IP::172.16.15.129>
<DEV::S0/SU2/ds1-0@AV-2620-4>
01/24/2009 19:05:53.413 Cisco CallManager|<CLID::MCS-7822-SERVER-Cluster>
<NID::172.16.240.124><CT::1,100,50,1.40793><MN::Directory Number><MV::2000>
<DEV::S0/SU2/ds1-0@AV-2620-4>
01/24/2009 19:05:53.413 Cisco CallManager|CTI:
RoutePatternToCtiCommandData::findValue() : RP=2000:, bRc=0, T=, #entries=0
|<CLID::MCS-7822-SERVER-Cluster><NID::172.16.240.124>
01/24/2009 19:05:53.413 Cisco CallManager|CTI:
RoutePatternToCtiCommandData::findValue() : RP=2000:, bRc=0, T=, #entries=0
|<CLID::MCS-7822-SERVER-Cluster><NID::172.16.240.124>
01/24/2009 19:05:53.413 Cisco CallManager|StationCdpc - INFO: clearType=0,
mHoldFlag=0, mMediaConnFlag=1.|<CLID::MCS-7822-SERVER-Cluster>
<NID::172.16.240.124><CT::1,100,50,1.40793><IP::172.16.15.129>
<DEV::S0/SU2/ds1-0@AV-2620-4>
01/24/2009 19:05:53.413 **Cisco CallManager|StationCdpc - INFO: NormalClear.**
|<CLID::MCS-7822-SERVER-Cluster><NID::172.16.240.124><CT::1,100,50,1.40793>
<IP::172.16.15.129><DEV::S0/SU2/ds1-0@AV-2620-4>
01/24/2009 19:05:53.413 Cisco CallManager|StationD: 4b16420 DefineTimeDate
timeDateInfo=? systemTime=1018663553.|<CLID::MCS-7822-SERVER-Cluster>

<NID::172.16.240.124><CT::1,100,50,1.40793><IP::172.16.15.129>
<DEV::S0/SU2/ds1-0@AV-2620-4>
01/24/2009 19:05:53.413 Cisco CallManager|StationD: 4b16420 SetSpeakerMode
speakermode=2(Off).|<CLID::MCS-7822-SERVER-Cluster><NID::172.16.240.124>
<CT::1,100,50,1.40793><IP::172.16.15.129><DEV::S0/SU2/ds1-0@AV-2620-4>
01/24/2009 19:05:53.413 Cisco CallManager|StationD: 4b16420
ClearPromptStatus lineInstance=1 callReference=16777368.
|<CLID::MCS-7822-SERVER-Cluster><NID::172.16.240.124><CT::1,100,50,1.40793>
<IP::172.16.15.129><DEV::S0/SU2/ds1-0@AV-2620-4>
01/24/2009 19:05:53.413 Cisco CallManager|StationD: 4b16420 CallState
callState=2(OnHook) lineInstance=1 callReference=16777368
|<CLID::MCS-7822-SERVER-Cluster><NID::172.16.240.124><CT::1,100,50,1.40793>
<IP::172.16.15.129><DEV::S0/SU2/ds1-0@AV-2620-4>
01/24/2009 19:05:53.413 Cisco CallManager|StationD: 4b16420 SelectSoftKeys
instance=0 reference=0 softKeySetIndex=0 validKeyMask=7.
|<CLID::MCS-7822-SERVER-Cluster><NID::172.16.240.124><CT::1,100,50,1.40793>
<IP::172.16.15.129><DEV::S0/SU2/ds1-0@AV-2620-4>
01/24/2009 19:05:53.413 Cisco CallManager|StationD: 4b16420
DisplayPromptStatus timeOutValue=0 promptStatus='Your current options'
lineInstance=0 callReference=0.|<CLID::MCS-7822-SERVER-Cluster>
<NID::172.16.240.124><CT::1,100,50,1.40793><IP::172.16.15.129>
<DEV::S0/SU2/ds1-0@AV-2620-4>
01/24/2009 19:05:53.413 Cisco CallManager|StationD: 4b16420
ActivateCallPlane lineInstance=0.|<CLID::MCS-7822-SERVER-Cluster>
<NID::172.16.240.124><CT::1,100,50,1.40793><IP::172.16.15.129>
<DEV::S0/SU2/ds1-0@AV-2620-4>
01/24/2009 19:05:53.413 Cisco CallManager|StationD: 4b16420 SetLamp
stimulus=9(Line) stimulusInstance=1 lampMode=1(LampOff).
|<CLID::MCS-7822-SERVER-Cluster><NID::172.16.240.124><CT::1,100,50,1.40793>
<IP::172.16.15.129><DEV::S0/SU2/ds1-0@AV-2620-4>
01/24/2009 19:05:53.413 Cisco CallManager|StationD: 4b16420 DefineTimeDate
timeDateInfo=? systemTime=1018663553.|<CLID::MCS-7822-SERVER-Cluster>
<NID::172.16.240.124> <CT::1,100,50,1.40793><IP::172.16.15.129>
<DEV::S0/SU2/ds1-0@AV-2620-4>
01/24/2009 19:05:53.413 Cisco CallManager|StationD: 4b16420 StopTone.
|<CLID::MCS-7822-SERVER-Cluster><NID::172.16.240.124><CT::1,100,50,1.40793>
<IP::172.16.15.129><DEV::S0/SU2/ds1-0@AV-2620-4>
01/24/2009 19:05:53.433 Cisco CallManager|MGCPBhHandler 172.16.15.129 - TCP
msg available from Device|<CLID::MCS-7822-SERVER-Cluster>
<NID::172.16.240.124><CT::1,100,48,1.299><IP::172.16.15.129><DEV::>
01/24/2009 19:05:53.433 Cisco CallManager|MGCPBhHandler - Receiving BhHdr:
0004 0000 0011 0100 0001 0005 |<CLID::MCS-7822-SERVER-Cluster>
<NID::172.16.240.124><CT::1,100,48,1.299><IP::172.16.15.129><DEV::>
01/24/2009 19:05:53.433 Cisco CallManager| |<CLID::MCS-7822-SERVER-Cluster>
<NID::172.16.240.124>
01/24/2009 19:05:53.433 Cisco CallManager|In Message --
PriReleaseCompleteMsg -- Protocol= PriNi2Protocol
|<CLID::MCS-7822-SERVER-Cluster><NID::172.16.240.124>
01/24/2009 19:05:53.433 Cisco CallManager|MMan_Id= 0. (iep= 0 dsl= 100
sapi= 0 ces= 0 IpAddr=810f10ac IpPort=2427)|<CLID::MCS-7822-SERVER-Cluster>
<NID::172.16.240.124>
01/24/2009 19:05:53.433 Cisco CallManager|IsdnMsgData1= 08 02 80 01 5A
|<CLID::MCS-7822-SERVER-Cluster><NID::172.16.240.124>
01/24/2009 19:05:53.443 Cisco CallManager|Delete entries from TransTable,
now this table has 0 entries|<CLID::MCS-7822-SERVER-Cluster>
<NID::172.16.240.124><CT::1,100,48,1.299><IP::172.16.15.129><DEV::>
01/24/2009 19:05:53.443 Cisco CallManager|Delete entries from CiCcp table,
now this table has 0 entries|<CLID::MCS-7822-SERVER-Cluster>
<NID::172.16.240.124><CT::1,100,48,1.299><IP::172.16.15.129><DEV::>
01/24/2009 19:05:53.443 Cisco CallManager|MGCPHandler send msg SUCCESSFULLY
to: 172.16.15.129
DLCX 329 S0/SU2/ds1-0/23@AV-2620-4 MGCP 0.1
C: D000000001000099000000000000000001
I: 2
X: 17
S:

|<CLID::MCS-7822-SERVER-Cluster><NID::172.16.240.124><CT::1,100,48,1.299>
<IP::172.16.15.129><DEV::>
01/24/2009 19:05:53.443 Cisco CallManager|Locations: release: cdccPID=
(1.13.77) no entry.|<CLID::MCS-7822-SERVER-Cluster><NID::172.16.240.124>
01/24/2009 19:05:53.483 Cisco CallManager|MGCPHandler received msg from:
172.16.15.129
250 329
P: PS=497, OS=79520, PR=496, OR=79360, PL=0, JI=512, LA=0

Debug MGCP Packet from Gateway for the Same Call

AV-2620-4

```
AV-2620-4# *Mar 1 00:35:23.919: MGCP Packet received from
172.16.240.124 --->
CRCX 337 S0/SU2/ds1-0/23@AV-2620-4 MGCP 0.1
C: D00000000100009d000000000000000002
M: inactive

*Mar 1 00:35:23.939: send_mgcp_msg, MGCP Packet
sent to 172.16.240.124 --->

*Mar 1 00:35:23.939: 200 337
I: 4 v=0 c=IN IP4 172.16.15.129 m=audio 16398 RTP/AVP 0 8 96 97 98 2 99 18
a=rtpmap:96 G.729a/8000/1
a=rtpmap:97 G.726-16/8000/1
a=rtpmap:98 G.726-24/8000/1
a=rtpmap:99 G.729b/8000/1
<---
*Mar 1 00:35:24.039: MGCP Packet received from
172.16.240.124-
MDCX 338 S0/SU2/ds1-0/23@AV-2620-4 MGCP 0.1
C: D00000000100009d000000000000000002
I: 4
X: 17
L: p:20, a:PCMU, s:off
M: recvonly
R: D/[0-9ABCD*#]
Q: process,loop

*Mar 1 00:35:24.047: send_mgcp_msg, MGCP Packet
sent to 172.16.240.124 --->

*Mar 1 00:35:24.047: 200 338 OK
<---
*Mar 1 00:35:24.079: MGCP Packet received from
172.16.240.124-
MDCX 339 S0/SU2/ds1-0/23@AV-2620-4 MGCP 0.1
C: D00000000100009d000000000000000002
I: 4
X: 17
L: p:20, a:PCMU, s:off
M: sendrecv
R: D/[0-9ABCD*#]
S:
Q: process,loop
v=0
o=- 4 0 IN EPN S0/SU2/ds1-0/23@AV-2620-4
s=Cisco SDP 0
t=0 0
c=IN IP4 172.16.240.126
m=audio 17294 RTP/AVP 96
a=rtpmap:96 PCMU

*Mar 1 00:35:24.091: send_mgcp_msg, MGCP Packet
```

```

sent to 172.16.240.124 ---->

*Mar 1 00:35:24.091: 200 339 OK
<----
*Mar 1 00:35:33.747: MGCP Packet received from
172.16.240.124-
MDCX 340 S0/SU2/ds1-0/23@AV-2620-4 MGCP 0.1
C: D00000000100009d00000000000000002
I: 4
X: 17
M: recvonly
R: D/[0-9ABCD*#]
Q: process,loop

*Mar 1 00:35:33.755: send_mgcp_msg, MGCP Packet
sent to 172.16.240.124 ---->

*Mar 1 00:35:33.755: 200 340 OK
<----
*Mar 1 00:35:33.811: MGCP Packet received from
172.16.240.124-
DLCX 341 S0/SU2/ds1-0/23@AV-2620-4 MGCP 0.1
C: D00000000100009d00000000000000002
I: 4
X: 17
S:

*Mar 1 00:35:33.831: send_mgcp_msg, MGCP Packet
sent to 172.16.240.124 ---->

*Mar 1 00:35:33.831: 250 341
P: PS=483, OS=77280, PR=481, OR=76960, PL=0,
JI=512, LA=0
<----
*Mar 1 00:35:42.955: send_mgcp_msg, MGCP Packet
sent to 172.16.240.124 ---->

*Mar 1 00:35:42.955: NTFY 140 *@AV-2620-4 MGCP 0.1
X: 0
O:
<----
*Mar 1 00:35:42.967: MGCP Packet received from
172.16.240.124-
200 140

AV-2620-4#
*Mar 1 00:35:57.955: send_mgcp_msg, MGCP Packet
sent to 172.16.240.124 ---->

*Mar 1 00:35:57.955: NTFY 141 *@AV-2620-4 MGCP 0.1
X: 0
O:
<----
*Mar 1 00:35:57.967: MGCP Packet received from
172.16.240.124-
200 141

```

Debug Output for Inbound Calls from PSTN

Cisco CallManager Trace

```

01/24/2009 19:09:19.644 Cisco CallManager|In Message -- PriSetupMsg --
Protocol=PriNi2Protocol|<CLID::MCS-7822-SERVER-Cluster>
<NID::172.16.240.124>

```

01/24/2009 19:09:19.644 Cisco CallManager|Ie - Ni2BearerCapabilityIe --
IEData= 04 03 80 90 A2 |<CLID::MCS-7822-SERVER-Cluster>
<NID::172.16.240.124>
01/24/2009 19:09:19.644 Cisco CallManager|Ie - Q931ChannelIdIe --
IEData= 18 03 A9 83 17 |<CLID::MCS-7822-SERVER-Cluster>
<NID::172.16.240.124>
01/24/2009 19:09:19.644 Cisco CallManager|Ie - Q931CallingPartyIe --
IEData= 6C 06 00 81 32 30 31 32 |<CLID::MCS-7822-SERVER-Cluster>
<NID::172.16.240.124>
01/24/2009 19:09:19.644 Cisco CallManager|Ie - Q931CalledPartyIe --
IEData= 70 05 80 32 30 30 30 |<CLID::MCS-7822-SERVER-Cluster>
<NID::172.16.240.124> 01/24/2009 19:09:19.644 Cisco CallManager
|MMan_Id= 0. (iep= 0 dsl= 100 sapi= 0 ces= 0 IpAddr=810f10ac IpPort=2427)
|<CLID::MCS-7822-SERVER-Cluster><NID::172.16.240.124>
01/24/2009 19:09:19.644 Cisco CallManager|IsdnMsgData1= 08 02 00 08 05
04 03 80 90 A2 18 03 A9 83 17 6C 06 00 81 32 30 31 32 70 05 80 32 30 30
30 |<CLID::MCS-7822-SERVER-Cluster><NID::172.16.240.124>
01/24/2009 19:09:19.674 Cisco CallManager|MGCPPn9d - initPortInfo:
portInfo[22] endpoint=S0/SU2/dsl-0/23@AV-2620-4, ci=16777370
|<CLID::MCS-7822-SERVER-Cluster><NID::172.16.240.124><CT::1,100,48,1.300>
<IP::172.16.15.129><DEV::>
01/24/2009 19:09:19.684 Cisco CallManager|Insert an entry into CiCcp
table, now this table has 1 entries|<CLID::MCS-7822-SERVER-Cluster>
<NID::172.16.240.124><CT::1,100,48,1.300><IP::172.16.15.129><DEV::>
01/24/2009 19:09:19.684 Cisco CallManager|Insert an entry into CiCcp
table, now this table has 2 entries|<CLID::MCS-7822-SERVER-Cluster>
<NID::172.16.240.124><CT::1,100,48,1.300><IP::172.16.15.129><DEV::>
01/24/2009 19:09:19.684 Cisco CallManager|Digit analysis:
match(fqcn="", cn="2012", pss="", dd="2000")|<CLID::MCS-7822-SERVER-
Cluster><NID::172.16.240.124><CT::1,100,48,1.300><IP::172.16.15.129>
<DEV::>
01/24/2009 19:09:19.684 Cisco CallManager|Digit analysis: analysis
results|<CLID::MCS-7822-SERVER-Cluster><NID::172.16.240.124>
<CT::1,100,48,1.300><IP::172.16.15.129><DEV::>
01/24/2009 19:09:19.684 Cisco CallManager|
|PretransformCallingPartyNumber=2012
|CallingPartyNumber=2012
|DialingPartition=
|DialingPattern=2000
|DialingRoutePatternRegularExpression=(2000)
|DialingWhere=
|PatternType=Enterprise
|PotentialMatches=NoPotentialMatchesExist
|DialingSdlProcessId=(1,34,5)
|PretransformDigitString=2000
|PretransformTagsList=SUBSCRIBER
|PretransformPositionalMatchList=2000
|CollectedDigits=2000
|UnconsumedDigits=
|TagsList=SUBSCRIBER
|PositionalMatchList=2000
|VoiceMailbox=2000
|DisplayName=
|RouteBlockFlag=RouteThisPattern
|InterceptPartition=
|InterceptPattern=
|InterceptWhere=
|InterceptSdlProcessId=(0,0,0)
|InterceptSsType=0
|InterceptSsKey=0 |<CLID::MCS-7822-SERVER-Cluster><NID::172.16.240.124>
<CT::1,100,48,1.300><IP::172.16.15.129><DEV::>
01/24/2009 19:09:19.684 Cisco CallManager|<CLID::MCS-7822-SERVER-
Cluster><NID::172.16.240.124><CT::1,100,48,1.300><MN::Directory Number>
<MV::2000><DEV::>
01/24/2009 19:09:19.684 Cisco CallManager|Locations: reserve: cdccPID=
(1.13.78) Orig=Dest=0 no need to reserve bw. |<CLID::MCS-7822-SERVER-

Cluster><NID::172.16.240.124>
01/24/2009 19:09:19.694 Cisco CallManager|StationD: 4b16420 DisplayText
text=' 2000 ' .|<CLID::MCS-7822-SERVER-Cluster><NID::172.16.240.124>
<CT::1,100,48,1.300><IP::172.16.15.129><DEV::>
01/24/2009 19:09:19.694 Cisco CallManager|StationD: 4b16420 CallState
callState=4(RingIn)lineInstance=1 callReference=16777371
|<CLID::MCS-7822-SERVER-Cluster><NID::172.16.240.124>
<CT::1,100,48,1.300><IP::172.16.15.129><DEV::>
01/24/2009 19:09:19.694 Cisco CallManager|StationD: 4b16420 CallInfo
callingPartyName='' callingParty=2012 cgpnVoiceMailbox=
calledPartyName='' calledParty=2000 cdpnVoiceMailbox=2000
originalCalledPartyName='' originalCalledParty=2000
originalCdpnVoiceMailbox=2000 originalCdpnRedirectReason=0
lastRedirectingPartyName='' lastRedirectingParty=2000
lastRedirectingVoiceMailbox=2000 lastRedirectingReason=0 callType=1
(InBound) lineInstance=1 callReference=16777371.|<CLID::MCS-7822-
SERVER-Cluster><NID::172.16.240.124><CT::1,100,48,1.300>
<IP::172.16.15.129><DEV::>
01/24/2009 19:09:19.694 Cisco CallManager
|StationD::star_StationOutputCallInfo(): callInfo:CI=16777371,
CallingPartyName=, CallingParty=2012, CalledPartyName=,
CalledParty=2000, OriginalCalledPartyName=, OriginalCalledParty=2000,
lastRedirectingPartyName=, lastRedirectingParty=
|<CLID::MCS-7822-SERVER-Cluster><NID::172.16.240.124>
<CT::1,100,48,1.300><IP::172.16.15.129><DEV::>
01/24/2009 19:09:19.694 Cisco CallManager|StationD: 4b16420 SetLamp
stimulus=9(Line) stimulusInstance=1 lampMode=5(LampBlink).
|<CLID::MCS-7822-SERVER-Cluster><NID::172.16.240.124>
<CT::1,100,48,1.300><IP::172.16.15.129><DEV::>
01/24/2009 19:09:19.694 Cisco CallManager|StationD: 4b16420 SetRinger
ringMode=3(OutsideRing).|<CLID::MCS-7822-SERVER-Cluster>
<NID::172.16.240.124><CT::1,100,48,1.300><IP::172.16.15.129><DEV::>
01/24/2009 19:09:19.694 Cisco CallManager|StationD: 4b16420
DisplayPromptStatus timeOutValue=0 promptStatus='From 2012'
lineInstance=1 callReference=16777371.|<CLID::MCS-7822-SERVER-Cluster>
<NID::172.16.240.124><CT::1,100,48,1.300><IP::172.16.15.129><DEV::>
01/24/2009 19:09:19.694 Cisco CallManager|StationD: 4b16420
SelectSoftKeys instance=1 reference=16777371 softKeySetIndex=3
validKeyMask=-1.|<CLID::MCS-7822-SERVER-Cluster><NID::172.16.240.124>
<CT::1,100,48,1.300><IP::172.16.15.129><DEV::>
01/24/2009 19:09:19.724 Cisco CallManager|MGCPHandler send msg
SUCCESSFULLY to: 172.16.15.129
CRCX 330 S0/SU2/ds1-0/23@AV-2620-4 MGCP 0.1
C: D00000000100009a0000000080000008
M: inactive
|<CLID::MCS-7822-SERVER-Cluster><NID::172.16.240.124>
<CT::1,100,48,1.300><IP::172.16.15.129><DEV::>
01/24/2009 19:09:19.764 Cisco CallManager|MGCPHandler received msg
from: 172.16.15.129
200 330
I: 3
v=0

c=IN IP4 172.16.15.129

m=audio 16476 RTP/AVP 0 8 96 97 98 2 99 18

a=rtpmap:96 G.729a/8000/1

a=rtpmap:97 G.726-16/8000/1

a=rtpmap:98 G.726-24/8000/1

a=rtpmap:99 G.729b/8000/1

|<CLID::MCS-7822-SERVER-Cluster><NID::172.16.240.124>

<CT::1,100,50,1.40808><IP::172.16.15.129><DEV::>
01/24/2009 19:09:19.764 Cisco CallManager|MGCPHandler received RESP
header w/ transId= 330|<CLID::MCS-7822-SERVER-Cluster>
<NID::172.16.240.124><CT::1,100,50,1.40808><IP::172.16.15.129><DEV::>
01/24/2009 19:09:19.764 Cisco CallManager|<CLID::MCS-7822-SERVER-
Cluster><NID::172.16.240.124><CT::1,100,50,1.40808><MN::MGCPendPoint>
<MV::S0/SU2/ds1-0/23@AV-2620-4><DEV::S0/SU2/ds1-0@AV-2620-4>
01/24/2009 19:09:19.764 Cisco CallManager|MGCPHandler received RESP
header w/ transId= 330 FOUND a match for CRCX|<CLID::MCS-7822-SERVER-
Cluster><NID::172.16.240.124><CT::1,100,50,1.40808>
<IP::172.16.15.129><DEV::S0/SU2/ds1-0@AV-2620-4>
01/24/2009 19:09:19.764 **Cisco CallManager|MGCPHandler rcv CRCX Ack
with RTP PortNum: 16476**|<CLID::MCS-7822-SERVER-Cluster>
<NID::172.16.240.124><CT::1,100,50,1.40808><IP::172.16.15.129>
<DEV::S0/SU2/ds1-0@AV-2620-4>
01/24/2009 19:09:19.774 Cisco CallManager|
|<CLID::MCS-7822-SERVER-Cluster><NID::172.16.240.124>
01/24/2009 19:09:19.774 **Cisco CallManager|Out Message --
PriCallProceedingMsg -- Protocol= PriNi2Protocol**
|<CLID::MCS-7822-SERVER-Cluster><NID::172.16.240.124>
01/24/2009 19:09:19.774 Cisco CallManager|Ie - Q931ChannelIdIe IEData=
18 03 A9 83 97 |<CLID::MCS-7822-SERVER-Cluster><NID::172.16.240.124>

01/24/2009 19:09:19.774 Cisco CallManager|MMan_Id= 0. (iep= 0 dsl= 100
sapi= 0 ces= 0 IpAddr=810f10ac IpPort=2427)|<CLID::MCS-7822-SERVER-
Cluster><NID::172.16.240.124>
01/24/2009 19:09:19.774 Cisco CallManager|IsdnMsgData2= 08 02 80 08 02
18 03 A9 83 97 |<CLID::MCS-7822-SERVER-Cluster><NID::172.16.240.124>
01/24/2009 19:09:19.774 Cisco CallManager|MGCPBhHandler - Sending
BhHdr: 0004 0000 0010 0100 0001 000a |<CLID::MCS-7822-SERVER-Cluster>
<NID::172.16.240.124><CT::1,100,48,1.300><IP::172.16.15.129><DEV::>
01/24/2009 19:09:19.774 Cisco CallManager|
|<CLID::MCS-7822-SERVER-Cluster><NID::172.16.240.124>
01/24/2009 19:09:19.774 **Cisco CallManager|Out Message --
PriAlertingMsg -- Protocol= PriNi2Protocol**|
<CLID::MCS-7822-SERVER-Cluster><NID::172.16.240.124>
01/24/2009 19:09:19.774 **Cisco CallManager|Ie - Q931ProgressIndIe
IEData= 1E 02 80 88** |<CLID::MCS-7822-SERVER-Cluster>
<NID::172.16.240.124>
01/24/2009 19:09:19.774 Cisco CallManager|MMan_Id= 0. (iep= 0 dsl=
100 sapi= 0 ces= 0 IpAddr=810f10ac IpPort=2427)|<CLID::MCS-7822-
SERVER-Cluster><NID::172.16.240.124>
01/24/2009 19:09:19.774 Cisco CallManager|IsdnMsgData2= 08 02 80 08 01
1E 02 80 88 |<CLID::MCS-7822-SERVER-Cluster><NID::172.16.240.124>
01/24/2009 19:09:19.774 Cisco CallManager|MGCPBhHandler - Sending
BhHdr: 0004 0000 0010 0100 0001 0009 |<CLID::MCS-7822-SERVER-Cluster>
<NID::172.16.240.124><CT::1,100,48,1.300><IP::172.16.15.129><DEV::>
01/24/2009 19:09:19.774 Cisco CallManager|MGCPHandler send msg
SUCCESSFULLY to: 172.16.15.129
RQNT 331 S0/SU2/ds1-0/23@AV-2620-4 MGCP 0.1
X: 17
S: G/rt
|<CLID::MCS-7822-SERVER-Cluster><NID::172.16.240.124>
<CT::1,100,48,1.300><IP::172.16.15.129><DEV::>
01/24/2009 19:09:19.795 Cisco CallManager|MGCPHandler received msg
from: 172.16.15.129
200 331 OK
|<CLID::MCS-7822-SERVER-Cluster><NID::172.16.240.124>
<CT::1,100,50,1.40809><IP::172.16.15.129><DEV::>
01/24/2009 19:09:19.795 Cisco CallManager|MGCPHandler received RESP
header w/ transId= 331|<CLID::MCS-7822-SERVER-Cluster>
<NID::172.16.240.124><CT::1,100,50,1.40809><IP::172.16.15.129><DEV::>
01/24/2009 19:09:19.795 Cisco CallManager|<CLID::MCS-7822-SERVER-
Cluster><NID::172.16.240.124><CT::1,100,50,1.40809><MN::MGCPendPoint>
<MV::S0/SU2/ds1-0/23@AV-2620-4><DEV::S0/SU2/ds1-0@AV-2620-4>
01/24/2009 19:09:19.795 Cisco CallManager|MGCPHandler received RESP

header w/ transId= 331 FOUND a match for RQNT|<CLID::MCS-7822-SERVER-Cluster><NID::172.16.240.124><CT::1,100,50,1.40809>
<IP::172.16.15.129><DEV::S0/SU2/ds1-0@AV-2620-4>
01/24/2009 19:09:19.795 Cisco CallManager|MGCPhandler recv RQNT Ack
from 172.16.15.129|<CLID::MCS-7822-SERVER-Cluster>
<NID::172.16.240.124><CT::1,100,50,1.40809><IP::172.16.15.129>
<DEV::S0/SU2/ds1-0@AV-2620-4>
01/24/2009 19:09:21.287 Cisco CallManager|MGCPhandler remove recent
Incoming transId 98|<CLID::MCS-7822-SERVER-Cluster>
<NID::172.16.240.124><CT::1,100,50,1.40806><IP::172.16.15.129><DEV::>
01/24/2009 19:09:24.852 Cisco CallManager|StationInit: 4b16420 OffHook.
|<CLID::MCS-7822-SERVER-Cluster><NID::172.16.240.124>
<CT::1,100,95,1.102463><IP::172.16.240.126><DEV::SEP003094C2856E>
01/24/2009 19:09:24.852 Cisco CallManager|StationD: 4b16420
ClearNotify.|<CLID::MCS-7822-SERVER-Cluster><NID::172.16.240.124>
<CT::1,100,95,1.102463><IP::172.16.240.126><DEV::SEP003094C2856E>
01/24/2009 19:09:24.852 Cisco CallManager|StationD: 4b16420 SetRinger
ringMode=1(RingOff).|<CLID::MCS-7822-SERVER-Cluster>
<NID::172.16.240.124><CT::1,100,95,1.102463><IP::172.16.240.126>
<DEV::SEP003094C2856E>
01/24/2009 19:09:24.852 Cisco CallManager|StationD: 4b16420 SetLamp
stimulus=9(Line) stimulusInstance=1 lampMode=2(LampOn).|<CLID::MCS-
7822-SERVER-Cluster><NID::172.16.240.124><CT::1,100,95,1.102463>
<IP::172.16.240.126><DEV::SEP003094C2856E>
01/24/2009 19:09:24.862 Cisco CallManager|StationD: 4b16420 CallState
callState=1(OffHook) lineInstance=1 callReference=16777371
|<CLID::MCS-7822-SERVER-Cluster><NID::172.16.240.124>
<CT::1,100,95,1.102463><IP::172.16.240.126><DEV::SEP003094C2856E>
01/24/2009 19:09:24.862 Cisco CallManager|StationD: 4b16420
ActivateCallPlane lineInstance=1.|<CLID::MCS-7822-SERVER-
Cluster><NID::172.16.240.124><CT::1,100,95,1.102463>
<IP::172.16.240.126><DEV::SEP003094C2856E>
01/24/2009 19:09:24.862 Cisco CallManager|ConnectionManager -
wait_AuConnectRequest(16777370,16777371): INFORM MEDIA LAYER
|<CLID::MCS-7822-SERVER-Cluster><NID::172.16.240.124>
<CT::1,100,95,1.102463><IP::172.16.240.126><DEV::SEP003094C2856E>
01/24/2009 19:09:24.862 Cisco CallManager|ConnectionManager -
storeMediaInfo(16777370): ADD NEW ENTRY, tail == 1
|<CLID::MCS-7822-SERVER-Cluster><NID::172.16.240.124>
<CT::1,100,95,1.102463> <IP::172.16.240.126><DEV::SEP003094C2856E>
01/24/2009 19:09:24.862 Cisco CallManager|ConnectionManager -
storeMediaInfo(16777371): ADD NEW ENTRY, tail == 2
|<CLID::MCS-7822-SERVER-Cluster> <NID::172.16.240.124>
<CT::1,100,95,1.102463><IP::172.16.240.126><DEV::SEP003094C2856E>
01/24/2009 19:09:24.862 Cisco CallManager|MediaCoordinator -
wait_AuConnectRequest()|<CLID::MCS-7822-SERVER-Cluster>
<NID::172.16.240.124><CT::1,100,95,1.102463><IP::172.16.240.126>
<DEV::SEP003094C2856E>
01/24/2009 19:09:24.862 Cisco CallManager|MediaCoordinator -
wait_AuConnectRequest - starting
MediaManager w/ existing (0) connections|<CLID::MCS-7822-SERVER-
Cluster><NID::172.16.240.124><CT::1,100,95,1.102463>
<IP::172.16.240.126><DEV::SEP003094C2856E>
01/24/2009 19:09:24.862 Cisco CallManager|MediaCoordinator -
wait_AuConnectRequest - new MediaManager(40,26) started
|<CLID::MCS-7822-SERVER-Cluster><NID::172.16.240.124>
<CT::1,100,95,1.102463><IP::172.16.240.126><DEV::SEP003094C2856E>
01/24/2009 19:09:24.872 Cisco CallManager|MediaManager(26) started
|<CLID::MCS-7822-SERVER-Cluster><NID::172.16.240.124>
<CT::1,100,40,26.1><IP::><DEV::>
01/24/2009 19:09:24.872 Cisco CallManager|MediaManager -
wait_AuConnectRequest|<CLID::MCS-7822-SERVER-Cluster>
<NID::172.16.240.124><CT::1,100,95,1.102463><IP::172.16.240.126>
<DEV::SEP003094C2856E>
01/24/2009 19:09:24.872 Cisco CallManager|MediaManager -
wait_AuConnectRequest - normal connection|<CLID::MCS-7822-SERVER-

Cluster><NID::172.16.240.124><CT::1,100,95,1.102463>
<IP::172.16.240.126><DEV::SEP003094C2856E>
01/24/2009 19:09:24.872 Cisco CallManager|MediaManager -
wait_AuConnectReply|<CLID::MCS-7822-SERVER-Cluster>
<NID::172.16.240.124><CT::1,100,8,27.1><IP::><DEV::>
01/24/2009 19:09:24.872 Cisco CallManager|MediaManager -
wait_AuConnectReply - received 1 responses, forwarding reply for
party1(16777370) and party2(16777371)|<CLID::MCS-7822-SERVER-Cluster>
<NID::172.16.240.124><CT::1,100,8,27.1><IP::><DEV::>
01/24/2009 19:09:24.872 Cisco CallManager|MediaCoordinator -
wait_AuConnectReply|<CLID::MCS-7822-SERVER-Cluster>
<NID::172.16.240.124><CT::1,100,8,27.1><IP::><DEV::>
01/24/2009 19:09:24.872 Cisco CallManager|ConnectionManager -
wait_AuConnectReply(16777370,
16777371)|<CLID::MCS-7822-SERVER-Cluster><NID::172.16.240.124>
<CT::1,100,8,27.1><IP::><DEV::>
01/24/2009 19:09:24.882 Cisco CallManager|StationD: 4b16420 StopTone.
|<CLID::MCS-7822-SERVER-Cluster><NID::172.16.240.124>
<CT::1,100,8,27.1><IP::><DEV::>
01/24/2009 19:09:24.882 Cisco CallManager|StationD: 4b16420
OpenReceiveChannel conferenceID=0 passThruPartyID=433
millisecondPacketSize=20 compressionType=4(Media_Payload_G711Ulaw64k)
qualifierIn=?. myIP: 7ef010ac (172.16.240.126)|<CLID::MCS-7822-SERVER-
Cluster><NID::172.16.240.124><CT::1,100,8,27.1><IP::><DEV::>
01/24/2009 19:09:24.882 Cisco CallManager|MGCPHandler send msg
SUCCESSFULLY to: 172.16.15.129
MDCX 332 S0/SU2/dsl-0/23@AV-2620-4 MGCP 0.1
C: D00000000100009a0000000080000008
I: 3
X: 17
L: p:20, a:PCMU, s:off
M: recvonly
R: D/[0-9ABCD*#]
Q: process,loop
|<CLID::MCS-7822-SERVER-Cluster><NID::172.16.240.124>
<CT::1,100,52,23.1><IP::><DEV::>
01/24/2009 19:09:24.882 Cisco CallManager| |<CLID::MCS-7822-SERVER-
Cluster><NID::172.16.240.124>
01/24/2009 19:09:24.882 Cisco CallManager|Out Message -- PriConnectMsg
-- Protocol= PriNI2Protocol|<CLID::MCS-7822-SERVER-Cluster>
<NID::172.16.240.124>
01/24/2009 19:09:24.882 Cisco CallManager|MMan_Id= 0. (iep= 0 dsl= 100
sapi= 0 ces= 0 IpAddr=810f10ac IpPort=2427)|<CLID::MCS-7822-SERVER-
Cluster><NID::172.16.240.124>
01/24/2009 19:09:24.882 Cisco CallManager|IsdnMsgData2= 08 02 80 08 07
|<CLID::MCS-7822-SERVER-Cluster><NID::172.16.240.124>
01/24/2009 19:09:24.882 Cisco CallManager|MGCPBhHandler - Sending
BhHdr: 0004 0000 0010 0100 0001 0005 |<CLID::MCS-7822-SERVER-Cluster>
<NID::172.16.240.124><CT::1,100,8,27.1><IP::><DEV::>
01/24/2009 19:09:24.882 Cisco CallManager|StationD: 4b16420 StopTone.
|<CLID::MCS-7822-SERVER-Cluster><NID::172.16.240.124>
<CT::1,100,8,27.1><IP::><DEV::>
01/24/2009 19:09:24.882 Cisco CallManager|StationD: 4b16420 CallState
callState=5(Connected) lineInstance=1 callReference=16777371
|<CLID::MCS-7822-SERVER-Cluster><NID::172.16.240.124><CT::1,100,8,27.1>
<IP::><DEV::>
01/24/2009 19:09:24.882 Cisco CallManager|StationD: 4b16420 CallInfo
callingPartyName='' callingParty=2012 cgnVoiceMailbox= calledPartyName=
' ' calledParty=2000 cdpnVoiceMailbox=2000 originalCalledPartyName=''
originalCalledParty=2000 originalCdpnVoiceMailbox=2000
originalCdpnRedirectReason=0 lastRedirectingPartyName=''
lastRedirectingParty=2000
lastRedirectingVoiceMailbox=2000 lastRedirectingReason=0 callType=1
(InBound) lineInstance=1 callReference=16777371.|<CLID::MCS-7822-SERVER-
Cluster><NID::172.16.240.124><CT::1,100,8,27.1><IP::><DEV::>
01/24/2009 19:09:24.882 Cisco CallManager

|StationD::star_StationOutputCallInfo(): callInfo: CI=16777371,
CallingPartyName=, CallingParty=2012, CalledPartyName=, CalledParty=2000,
OriginalCalledPartyName=, OriginalCalledParty=2000,
lastRedirectingPartyName=, lastRedirectingParty=|<CLID::MCS-7822-SERVER-
Cluster><NID::172.16.240.124><CT::1,100,8,27.1><IP::><DEV::>
01/24/2009 19:09:24.882 Cisco CallManager|StationD: 4b16420
SelectSoftKeys instance=1 reference=16777371 softKeySetIndex=1
validKeyMask=-1.|<CLID::MCS-7822-SERVER-Cluster><NID::172.16.240.124>
<CT::1,100,8,27.1><IP::><DEV::>
01/24/2009 19:09:24.882 Cisco CallManager|StationD: 4b16420
DisplayPromptStatus timeOutValue=0 promptStatus='Connected'
lineInstance=1 callReference=16777371.|<CLID::MCS-7822-SERVER-Cluster>
<NID::172.16.240.124><CT::1,100,8,27.1><IP::><DEV::>
01/24/2009 19:09:24.882 **Cisco CallManager|StationInit: 4b16420**
OpenReceiveChannelAck Status=0, IpAddr=0x7ef010ac, Port=22082, PartyID=433
|<CLID::MCS-7822-SERVER-Cluster><NID::172.16.240.124>
<CT::1,100,95,1.102464><IP::172.16.240.126><DEV::SEP003094C2856E>
01/24/2009 19:09:24.912 Cisco CallManager|MGCPHandler received msg from:
172.16.15.129
200 332 OK
|<CLID::MCS-7822-SERVER-Cluster><NID::172.16.240.124>
<CT::1,100,50,1.40810><IP::172.16.15.129><DEV::>
01/24/2009 19:09:24.912 Cisco CallManager|MGCPHandler received RESP
header w/ transId= 332|<CLID::MCS-7822-SERVER-Cluster><NID::172.16.240.124>
<CT::1,100,50,1.40810><IP::172.16.15.129>
<DEV::>
01/24/2009 19:09:24.912 Cisco CallManager|<CLID::MCS-7822-SERVER-Cluster>
<NID::172.16.240.124><CT::1,100,50,1.40810><MN::MGCP endPoint>
<MV::S0/SU2/ds1-0/23@AV-2620-4><DEV::S0/SU2/ds1-0@AV-2620-4>
01/24/2009 19:09:24.912 Cisco CallManager|MGCPHandler received RESP header
w/ transId= 332 FOUND a match for MDCX|<CLID::MCS-7822-SERVER-Cluster>
<NID::172.16.240.124><CT::1,100,50,1.40810><IP::172.16.15.129>
<DEV::S0/SU2/ds1-0@AV-2620-4>
01/24/2009 19:09:24.912 Cisco CallManager|MGCPHandler send msg SUCCESSFULLY
to: 172.16.15.129
RQNT 333 S0/SU2/ds1-0/23@AV-2620-4 MGCP 0.1
X: 17
S:
|<CLID::MCS-7822-SERVER-Cluster><NID::172.16.240.124><CT::1,100,8,27.1>
<IP::><DEV::>
01/24/2009 19:09:24.912 Cisco CallManager|MediaManager - wait_AuConnectInfo
|<CLID::MCS-7822-SERVER-Cluster><NID::172.16.240.124><CT::1,100,50,1.40810>
<IP::172.16.15.129><DEV::S0/SU2/ds1-0@AV-2620-4>
01/24/2009 19:09:24.912 Cisco CallManager|MediaManager - wait_AuConnectInfo
- recieved response, fowarding|<CLID::MCS-7822-SERVER-Cluster>
<NID::172.16.240.124><CT::1,100,50,1.40810><IP::172.16.15.129>
<DEV::S0/SU2/ds1-0@AV-2620-4>
01/24/2009 19:09:24.912 Cisco CallManager|MediaCoordinator -
wait_AuConnectInfoInd|<CLID::MCS-7822-SERVER-Cluster><NID::172.16.240.124>
<CT::1,100,50,1.40810><IP::172.16.15.129><DEV::S0/SU2/ds1-0@AV-2620-4>
01/24/2009 19:09:24.912 **Cisco CallManager|StationD: 4b16420**
StartMediaTransmission conferenceID=0 passThruPartyID=433
remoteIpAddress=810f10ac(172.16.15.129) remotePortNumber=16476
milliSecondPacketSize=20 compressType=4(Media_Payload_G711UlLaw64k)
qualifierOut=?. myIP: 7ef010ac (172.16.240.126)|<CLID::MCS-7822-SERVER-
Cluster><NID::172.16.240.124><CT::1,100,50,1.40810><IP::172.16.15.129>
<DEV::S0/SU2/ds1-0@AV-2620-4>
01/24/2009 19:09:24.912 Cisco CallManager|Locations: adjust: cdccPID=
(1.13.78) Orig=Dest=0 no entry for cdcc. No need to adjust.|<CLID::MCS-
7822-SERVER-Cluster><NID::172.16.240.124>
01/24/2009 19:09:24.922 Cisco CallManager|MGCPHandler received msg from:
172.16.15.129
200 333 OK
|<CLID::MCS-7822-SERVER-Cluster><NID::172.16.240.124>
<CT::1,100,50,1.40811><IP::172.16.15.129><DEV::>
01/24/2009 19:09:24.922 Cisco CallManager|MGCPHandler received RESP header

w/ transId= 333|<CLID::MCS-7822-SERVER-Cluster><NID::172.16.240.124>
<CT::1,100,50,1.40811><IP::172.16.15.129><DEV::>
01/24/2009 19:09:24.922 Cisco CallManager|<CLID::MCS-7822-SERVER-Cluster>
<NID::172.16.240.124><CT::1,100,50,1.40811><MN::MGCP endPoint>
<MV::S0/SU2/ds1-0/23@AV-2620-4><DEV::S0/SU2/ds1-0@AV-2620-4>
01/24/2009 19:09:24.922 Cisco CallManager|MGCPHandler received RESP header
w/ transId= 333 FOUND a match for RQNT|<CLID::MCS-7822-SERVER-Cluster>
<NID::172.16.240.124><CT::1,100,50,1.40811><IP::172.16.15.129>
<DEV::S0/SU2/ds1-0@AV-2620-4>
01/24/2009 19:09:24.922 Cisco CallManager|MGCPHandler recv RQNT Ack from
172.16.15.129|<CLID::MCS-7822-SERVER-Cluster><NID::172.16.240.124>
<CT::1,100,50,1.40811><IP::172.16.15.129><DEV::S0/SU2/ds1-0@AV-2620-4>
01/24/2009 19:09:24.922 Cisco CallManager|MGCPHandler send msg
SUCCESSFULLY to: 172.16.15.129
MDCX 334 S0/SU2/ds1-0/23@AV-2620-4 MGCP 0.1
C: D00000000100009a0000000080000008
I: 3
X: 17
L: p:20, a:PCMU, s:off
M: sendrecv
R: D/[0-9ABCD*#]
S:
Q: process,loop

v=0

o=- 3 0 IN EPN S0/SU2/ds1-0/23@AV-2620-4
s=Cisco SDP 0
t=0 0
c=IN IP4 172.16.240.126
m=audio 22082 RTP/AVP 96
a=rtptime:96 PCMU
|<CLID::MCS-7822-SERVER-Cluster><NID::172.16.240.124> <CT::1,100,95,1.102464>
<IP::172.16.240.126><DEV::SEP003094C2856E>
01/24/2009 19:09:24.932 Cisco CallManager|MGCPBhHandler 172.16.15.129 -
TCP msg available from Device|<CLID::MCS-7822-SERVER-Cluster>
<NID::172.16.240.124><CT::1,100,48,1.301><IP::172.16.15.129><DEV::>
01/24/2009 19:09:24.932 Cisco CallManager|MGCPBhHandler - Receiving
BhHdr: 0004 0000 0011 0100 0001 0005 |<CLID::MCS-7822-SERVER-Cluster>
<NID::172.16.240.124><CT::1,100,48,1.301><IP::172.16.15.129><DEV::>
01/24/2009 19:09:24.932 Cisco CallManager| |<CLID::MCS-7822-SERVER-
Cluster><NID::172.16.240.124>
01/24/2009 19:09:24.932 **Cisco CallManager|In Message --**
PriConnectAcknowledgeMsg -- Protocol= PriNi2Protocol|<CLID::MCS-7822-
SERVER-Cluster><NID::172.16.240.124>
01/24/2009 19:09:24.932 Cisco CallManager|MMan_Id= 0. (iep= 0 ds1=
100 sapi= 0 ces= 0 IpAddr=810f10ac IpPort=2427)|<CLID::MCS-7822-SERVER-
Cluster><NID::172.16.240.124>
01/24/2009 19:09:24.932 Cisco CallManager|IsdnMsgData1= 08 02 00 08 0F
|<CLID::MCS-7822-SERVER-Cluster><NID::172.16.240.124>
01/24/2009 19:09:24.962 Cisco CallManager|MGCPHandler received msg
from: 172.16.15.129
200 334 OK
|<CLID::MCS-7822-SERVER-Cluster><NID::172.16.240.124>
<CT::1,100,50,1.40812><IP::172.16.15.129><DEV::>
01/24/2009 19:09:24.962 Cisco CallManager|MGCPHandler received RESP
header w/ transId= 334|<CLID::MCS-7822-SERVER-Cluster>
<NID::172.16.240.124> <CT::1,100,50,1.40812><IP::172.16.15.129>
<DEV::>
01/24/2009 19:09:24.962 Cisco CallManager|<CLID::MCS-7822-SERVER-
Cluster><NID::172.16.240.124><CT::1,100,50,1.40812><MN::MGCP endPoint>
<MV::S0/SU2/ds1-0/23@AV-2620-4><DEV::S0/SU2/ds1-0@AV-2620-4>
01/24/2009 19:09:24.962 Cisco CallManager|MGCPHandler received RESP
header w/ transId= 334 FOUND a match for MDCX|<CLID::MCS-7822-SERVER-
Cluster><NID::172.16.240.124><CT::1,100,50,1.40812><IP::172.16.15.129>
<DEV::S0/SU2/ds1-0@AV-2620-4>

01/24/2009 19:09:30.710 Cisco CallManager|StationInit: 4b16420 OnHook.
|<CLID::MCS-7822-SERVER-Cluster><NID::172.16.240.124>
<CT::1,100,95,1.102467> <IP::172.16.240.126><DEV::SEP003094C2856E>
01/24/2009 19:09:30.710 Cisco CallManager|CTI:
RoutePatternToCtiCommandData::findValue() : RP=2000:, bRc=0, T=,
#entries=0|<CLID::MCS-7822-SERVER-Cluster><NID::172.16.240.124>
01/24/2009 19:09:30.721 Cisco CallManager|StationD: 4b16420
SetSpeakerMode speakermode=2(Off).|<CLID::MCS-7822-SERVER-Cluster>
<NID::172.16.240.124><CT::1,100,95,1.102467><IP::172.16.240.126>
<DEV::SEP003094C2856E>
01/24/2009 19:09:30.721 Cisco CallManager|StationD: 4b16420
ClearPromptStatus lineInstance=1 callReference=16777371.
|<CLID::MCS-7822-SERVER-Cluster><NID::172.16.240.124>
<CT::1,100,95,1.102467><IP::172.16.240.126><DEV::SEP003094C2856E>
01/24/2009 19:09:30.721 Cisco CallManager|StationD: 4b16420
CallState callState=2(OnHook) lineInstance=1 callReference=16777371
|<CLID::MCS-7822-SERVER-Cluster><NID::172.16.240.124>
<CT::1,100,95,1.102467><IP::172.16.240.126><DEV::SEP003094C2856E>
01/24/2009 19:09:30.721 Cisco CallManager|StationD: 4b16420
SelectSoftKeys instance=0 reference=0 softKeySetIndex=0
validKeyMask=7. |<CLID::MCS-7822-SERVER-Cluster><NID::172.16.240.124>
<CT::1,100,95,1.102467><IP::172.16.240.126><DEV::SEP003094C2856E>
01/24/2009 19:09:30.721 Cisco CallManager|StationD: 4b16420
DisplayPromptStatus timeOutValue=0 promptStatus='Your current
options' lineInstance=0 callReference=0. |<CLID::MCS-7822-SERVER-
Cluster><NID::172.16.240.124><CT::1,100,95,1.102467>
<IP::172.16.240.126><DEV::SEP003094C2856E>
01/24/2009 19:09:30.721 Cisco CallManager|StationD: 4b16420
ctivateCallPlane lineInstance=0.
|<CLID::MCS-7822-SERVER-Cluster><NID::172.16.240.124>
<CT::1,100,95,1.102467><IP::172.16.240.126><DEV::SEP003094C2856E>
01/24/2009 19:09:30.721 Cisco CallManager|StationD: 4b16420
SetLamp stimulus=9(Line) stimulusInstance=1 lampMode=1(LampOff).
|<CLID::MCS-7822-SERVER-Cluster><NID::172.16.240.124>
<CT::1,100,95,1.102467><IP::172.16.240.126><DEV::SEP003094C2856E>
01/24/2009 19:09:30.721 Cisco CallManager|StationD: 4b16420
DefineTimeDate timeDateInfo=? systemTime=1018663770.
|<CLID::MCS-7822-SERVER-Cluster><NID::172.16.240.124>
<CT::1,100,95,1.102467><IP::172.16.240.126><DEV::SEP003094C2856E>
01/24/2009 19:09:30.721 Cisco CallManager|StationD: 4b16420
StopTone. |<CLID::MCS-7822-SERVER-Cluster><NID::172.16.240.124>
<CT::1,100,95,1.102467><IP::172.16.240.126><DEV::SEP003094C2856E>
01/24/2009 19:09:30.721 Cisco CallManager|ConnectionManager -
wait_AuDisconnectRequest(16777371,16777370): STOP SESSION
|<CLID::MCS-7822-SERVER-Cluster><NID::172.16.240.124>
<CT::1,100,95,1.102467><IP::172.16.240.126><DEV::SEP003094C2856E>
01/24/2009 19:09:30.721 Cisco CallManager|ConnectionManager -
storeMediaInfo(16777371): EXISTING ENTRY DISCOVERED, tail == 2
|<CLID::MCS-7822-SERVER-Cluster><NID::172.16.240.124>
<CT::1,100,95,1.102467><IP::172.16.240.126><DEV::SEP003094C2856E>
01/24/2009 19:09:30.721 Cisco CallManager|ConnectionManager -
storeMediaInfo(16777370): EXISTING ENTRY DISCOVERED, tail == 2
|<CLID::MCS-7822-SERVER-Cluster><NID::172.16.240.124>
<CT::1,100,95,1.102467><IP::172.16.240.126><DEV::SEP003094C2856E>
01/24/2009 19:09:30.721 Cisco CallManager|MediaCoordinator -
wait_AuDisconnectRequest |<CLID::MCS-7822-SERVER-Cluster>
<NID::172.16.240.124><CT::1,100,95,1.102467><IP::172.16.240.126>
<DEV::SEP003094C2856E>
01/24/2009 19:09:30.731 Cisco CallManager|MediaCoordinator -
wait_AuDisconnectRequest - sending disconnect to MediaManager(26)
|<CLID::MCS-7822-SERVER-Cluster><NID::172.16.240.124>
<CT::1,100,95,1.102467><IP::172.16.240.126><DEV::SEP003094C2856E>
01/24/2009 19:09:30.731 Cisco CallManager|MediaManager -
wait_AuDisconnectRequest |<CLID::MCS-7822-SERVER-Cluster>
<NID::172.16.240.124><CT::1,100,95,1.102467><IP::172.16.240.126>

<DEV::SEP003094C2856E>
01/24/2009 19:09:30.731 Cisco CallManager|MediaManager -
wait_AuDisconnectRequest - StopSession sending disconnect to
(71,26) and remove connection from list|<CLID::MCS-7822-SERVER-
Cluster><NID::172.16.240.124><CT::1,100,95,1.102467>
<IP::172.16.240.126><DEV::SEP003094C2856E>
01/24/2009 19:09:30.731 Cisco CallManager|StationD: 4b16420
CloseReceiveChannel conferenceID=0 passThruPartyID=433. myIP:
7ef010ac (172.16.240.126)|<CLID::MCS-7822-SERVER-Cluster>
<NID::172.16.240.124><CT::1,100,95,1.102467><IP::172.16.240.126>
<DEV::SEP003094C2856E>
01/24/2009 19:09:30.731 Cisco CallManager|StationD: 4b16420
StopMediaTransmission conferenceID=0 passThruPartyID=433. myIP:
7ef010ac (172.16.240.126)|<CLID::MCS-7822-SERVER-Cluster>
<NID::172.16.240.124><CT::1,100,95,1.102467><IP::172.16.240.126>
<DEV::SEP003094C2856E>
01/24/2009 19:09:30.731 Cisco CallManager|MGCPHandler send msg
SUCCESSFULLY to: 172.16.15.129
MDCX 335 S0/SU2/ds1-0/23@AV-2620-4 MGCP 0.1
C: D00000000100009a0000000080000008
I: 3
X: 17
M: recvonly
R: D/[0-9ABCD*#]
Q: process,loop
|<CLID::MCS-7822-SERVER-Cluster><NID::172.16.240.124>
<CT::1,100,95,1.102467><IP::172.16.240.126><DEV::SEP003094C2856E>
01/24/2009 19:09:30.761 Cisco CallManager|MGCPHandler received
msg from: 172.16.15.129
200 335 OK
|<CLID::MCS-7822-SERVER-Cluster><NID::172.16.240.124>
<CT::1,100,50,1.40813><IP::172.16.15.129><DEV::>
01/24/2009 19:09:30.761 Cisco CallManager|MGCPHandler received
RESP header w/ transId= 335|<CLID::MCS-7822-SERVER-Cluster>
<NID::172.16.240.124><CT::1,100,50,1.40813><IP::172.16.15.129>
<DEV::>
01/24/2009 19:09:30.761 Cisco CallManager|<CLID::MCS-7822-SERVER-
Cluster><NID::172.16.240.124><CT::1,100,50,1.40813>
<MN::MGCP endPoint><MV::S0/SU2/ds1-0/23@AV-2620-4>
<DEV::S0/SU2/ds1-0@AV-2620-4>
01/24/2009 19:09:30.761 Cisco CallManager|MGCPHandler received
RESP header w/ transId= 335 FOUND a match for MDCX
|<CLID::MCS-7822-SERVER-Cluster><NID::172.16.240.124>
<CT::1,100,50,1.40813><IP::172.16.15.129>
<DEV::S0/SU2/ds1-0@AV-2620-4>
01/24/2009 19:09:30.761 Cisco CallManager|MediaManager -
wait_AuDisconnectReply|<CLID::MCS-7822-SERVER-Cluster>
<NID::172.16.240.124><CT::1,100,50,1.40813><IP::172.16.15.129>
<DEV::S0/SU2/ds1-0@AV-2620-4>
01/24/2009 19:09:30.761 Cisco CallManager|MediaManager -
wait_AuDisconnectReply - received all disconnect replies,
forwarding a reply for party1(16777371) and party2(16777370)
|<CLID::MCS-7822-SERVER-Cluster><NID::172.16.240.124>
<CT::1,100,50,1.40813><IP::172.16.15.129>
<DEV::S0/SU2/ds1-0@AV-2620-4>
01/24/2009 19:09:30.761 Cisco CallManager|MediaCoordinator -
wait_AuDisconnectReply|<CLID::MCS-7822-SERVER-Cluster>
<NID::172.16.240.124><CT::1,100,50,1.40813><IP::172.16.15.129>
<DEV::S0/SU2/ds1-0@AV-2620-4>
01/24/2009 19:09:30.761 Cisco CallManager|MediaCoordinator -
wait_AuDisconnectReply - removing MediaManager(26) from
connection list|<CLID::MCS-7822-SERVER-Cluster>
<NID::172.16.240.124><CT::1,100,50,1.40813><IP::172.16.15.129>
<DEV::S0/SU2/ds1-0@AV-2620-4>
01/24/2009 19:09:30.761 Cisco CallManager|ConnectionManager -
wait_AuDisconnectReply(16777371,16777370):STOP SESSION

```
|<CLID::MCS-7822-SERVER-Cluster><NID::172.16.240.124>
<CT::1,100,50,1.40813><IP::172.16.15.129>
<DEV::S0/SU2/ds1-0@AV-2620-4>
01/24/2009 19:09:30.761 Cisco CallManager|ConnectionManager -
deleteMediaInfoEntry(16777371): ENTRY DELETED, tail == 1
|<CLID::MCS-7822-SERVER-Cluster><NID::172.16.240.124>
<CT::1,100,50,1.40813><IP::172.16.15.129>
<DEV::S0/SU2/ds1-0@AV-2620-4>
01/24/2009 19:09:30.761 Cisco CallManager|ConnectionManager -
deleteMediaInfoEntry(16777370): ENTRY DELETED, tail == 0
|<CLID::MCS-7822-SERVER-Cluster><NID::172.16.240.124>
<CT::1,100,50,1.40813><IP::172.16.15.129>
<DEV::S0/SU2/ds1-0@AV-2620-4>
01/24/2009 19:09:30.771 Cisco CallManager| |<CLID::MCS-7822-
SERVER-Cluster><NID::172.16.240.124>
01/24/2009 19:09:30.771 Cisco CallManager|Out Message --
PriDisconnectMsg -- Protocol= PriNi2Protocol|
<CLID::MCS-7822-SERVER-Cluster><NID::172.16.240.124>
01/24/2009 19:09:30.771 Cisco CallManager|Ie - Q931CauseIe
IEData= 08 02 80 90 |<CLID::MCS-7822-SERVER-Cluster>
<NID::172.16.240.124>
01/24/2009 19:09:30.771 Cisco CallManager|MMan_Id= 0.
(iep= 0 dsl= 100 sapi= 0 ces= 0 IpAddr=810f10ac IpPort=2427)
|<CLID::MCS-7822-SERVER-Cluster><NID::172.16.240.124>

01/24/2009 19:09:30.771 Cisco CallManager|IsdnMsgData2= 08
02 80 08 45 08 02 80 90 |<CLID::MCS-7822-SERVER-Cluster>
<NID::172.16.240.124>
01/24/2009 19:09:30.771 Cisco CallManager|MGCPBhHandler -
Sending BhHdr: 0004 0000 0010 0100 0001 0009
|<CLID::MCS-7822-SERVER-Cluster><NID::172.16.240.124>
<CT::1,100,50,1.40813><IP::172.16.15.129><DEV:
:S0/SU2/ds1-0@AV-2620-4>
01/24/2009 19:09:30.801 Cisco CallManager|MGCPBhHandler
172.16.15.129 - TCP msg available from Device|
<CLID::MCS-7822-SERVER-Cluster><NID::172.16.240.124>
<CT::1,100,48,1.302><IP::172.16.15.129><DEV::>
01/24/2009 19:09:30.801 Cisco CallManager|MGCPBhHandler -
Receiving BhHdr: 0004 0000 0011 0100 0001 0005
|<CLID::MCS-7822-SERVER-Cluster><NID::172.16.240.124>
<CT::1,100,48,1.302><IP::172.16.15.129><DEV::>
01/24/2009 19:09:30.801 Cisco CallManager|
|<CLID::MCS-7822-SERVER-Cluster><NID::172.16.240.124>
01/24/2009 19:09:30.801 Cisco CallManager|In Message --
PriReleaseMsg -- Protocol= PriNi2Protocol|<CLID::
MCS-7822-SERVER-Cluster><NID::172.16.240.124>
01/24/2009 19:09:30.801 Cisco CallManager|MMan_Id= 0.
(iep= 0 dsl= 100 sapi= 0 ces= 0 IpAddr=810f10ac
IpPort=2427)|<CLID::MCS-7822-SERVER-Cluster>
<NID::172.16.240.124>
01/24/2009 19:09:30.801 Cisco CallManager|IsdnMsgData1=
08 02 00 08 4D |<CLID::MCS-7822-SERVER-Cluster>
<NID::172.16.240.124>
01/24/2009 19:09:30.801 Cisco CallManager| |<CLID::MCS-7
822-SERVER-Cluster><NID::172.16.240.124>
01/24/2009 19:09:30.801 Cisco CallManager|Out Message --
PriReleaseCompleteMsg

-- Protocol
= PriNi2Protocol
|<CLID::MCS-7822-SERVER-Cluster><NID::172.16.240.124>
01/24/2009 19:09:30.801 Cisco CallManager|MMan_Id= 0.
(iep= 0 dsl= 100 sapi= 0 ces= 0 IpAddr=810f10ac
IpPort=2427)|<CLID::MCS-7822-SERVER-Cluster>
<NID::172.16.240.124>
01/24/2009 19:09:30.801 Cisco CallManager|IsdnMsgData2=
```


08 02 80 08 5A |<CLID::MCS-7822-SERVER-Cluster>
<NID::172.16.240.124>
01/24/2009 19:09:30.801 Cisco CallManager|MGCPBhHandler -
Sending BhHdr: 0004 0000 0010 0100 0001 0005
|<CLID::MCS-7822-SERVER-Cluster><NID::172.16.240.124>
<CT::1,100,48,1.302><IP::172.16.15.129><DEV::>
01/24/2009 19:09:30.801 Cisco CallManager|Delete entries
from TransTable, now this table has 0 entries|
<CLID::MCS-7822-SERVER-Cluster><NID::172.16.240.124>
<CT::1,100,48,1.302><IP::172.16.15.129><DEV::>
01/24/2009 19:09:30.801 Cisco CallManager|Delete entries
from CiCcp table, now this table has 0 entries|
<CLID::MCS-7822-SERVER-Cluster><NID::172.16.240.124>
<CT::1,100,48,1.302><IP::172.16.15.129><DEV::>
01/24/2009 19:09:30.801 Cisco CallManager|MGCPHandler
send msg SUCCESSFULLY to: 172.16.15.129
DLCX 336 S0/SU2/ds1-0/23@AV-2620-4 MGCP 0.1
C: D00000000100009a0000000080000008
I: 3
X: 17
S:
|<CLID::MCS-7822-SERVER-Cluster><NID::172.16.240.124>
<CT::1,100,48,1.302><IP::172.16.15.129><DEV::>
01/24/2009 19:09:30.801 Cisco CallManager|Locations:
release: cdccPID=(1.13.78) no entry.|<CLID::MCS-7822-
SERVER-Cluster><NID::172.16.240.124>
01/24/2009 19:09:30.851 Cisco CallManager|MGCPHandler
received msg from: 172.16.15.129
250 336
P: PS=289, OS=46240, PR=288, OR=46080, PL=0, JI=512,
LA=0 |<CLID::MCS-7822-SERVER-Cluster>
<NID::172.16.240.124><CT::1,100,50,1.40814>
<IP::172.16.15.129><DEV::>
01/24/2009 19:09:30.851 Cisco CallManager|MGCPHandler
received RESP header w/ transId= 336|<CLID::MCS-7822-
SERVER-Cluster><NID::172.16.240.124>
<CT::1,100,50,1.40814><IP::172.16.15.129><DEV::>
01/24/2009 19:09:30.851 Cisco CallManager|<CLID::MCS-
7822-SERVER-Cluster><NID::172.16.240.124>
<CT::1,100,50,1.40814><MN::MGCPendPoint>
<MV::S0/SU2/ds1-0/23@AV-2620-4><DEV::S0/SU2/ds1-0@AV-2620-4>
01/24/2009 19:09:30.851 Cisco CallManager|MGCPHandler
received RESP header w/ transId= 336 FOUND a match
for DLCX|<CLID::MCS-7822-SERVER-Cluster>
<NID::172.16.240.124><CT::1,100,50,1.40814>
<IP::172.16.15.129><DEV::S0/SU2/ds1-0@AV-2620-4>
01/24/2009 19:09:36.279 Cisco CallManager|MGCPHandler
received msg from: 172.16.15.129
NTFY 100 *@AV-2620-4 MGCP 0.1
X: 0
O:
|<CLID::MCS-7822-SERVER-Cluster><NID::172.16.240.124>
<CT::1,100,50,1.40815><IP::172.16.15.129><DEV::>
01/24/2009 19:09:36.279 Cisco CallManager
|<CLID::MCS-7822-SERVER-Cluster><NID::172.16.240.124>
<CT::1,100,50,1.40815><MN::MGCPendPoint>
<MV::*@AV-2620-4><DEV::>
01/24/2009 19:09:36.289 Cisco CallManager|MGCPHandler
send msg SUCCESSFULLY to: 172.16.15.129
200 100
|<CLID::MCS-7822-SERVER-Cluster><NID::172.16.240.124>
<CT::1,100,50,1.40815><IP::172.16.15.129><DEV::>

Debug MGCP Packet from Gateway

AV-2620-4

AV-2620-4#debug mgcp packet

Media Gateway Control Protocol packets debugging is on

AV-2620-4# *Mar 1 00:37:12.955: send_mgcp_msg, MGCP Packet sent to 172.16.240.124 --->

*Mar 1 00:37:12.955: NTFY 146 *@AV-2620-4 MGCP 0.1

X: 0

O:

<---

*Mar 1 00:37:12.967: MGCP Packet received from 172.16.240.124-

200 146

*Mar 1 00:37:20.447: MGCP Packet received from 172.16.240.124-

CRCX 342 S0/SU2/ds1-0/23@AV-2620-4 MGCP 0.1

C: D00000000100009e0000000080000009

M: inactive

*Mar 1 00:37:20.467: send_mgcp_msg, MGCP Packet sent to 172.16.240.124 --->

*Mar 1 00:37:20.467: 200 342

I: 5

v=0

c=IN IP4 172.16.15.129

m=audio 16542 RTP/AVP 0 8 96 97 98 2 99 18

a=rtpmap:96 G.729a/8000/1

a=rtpmap:97 G.726-16/8000/1

a=rtpmap:98 G.726-24/8000/1

a=rtpmap:99 G.729b/8000/1

<---

*Mar 1 00:37:20.499: MGCP Packet received from 172.16.240.124-

RQNT 343 S0/SU2/ds1-0/23@AV-2620-4 MGCP 0.1

X: 17

S: G/rt

*Mar 1 00:37:20.503: send_mgcp_msg, MGCP Packet sent to 172.16.240.124 --->

*Mar 1 00:37:20.503: 200 343 OK

<---

*Mar 1 00:37:24.915: MGCP Packet received from 172.16.240.124-

MDCX 344 S0/SU2/ds1-0/23@AV-2620-4 MGCP 0.1

C: D00000000100009e0000000080000009

I: 5

X: 17

L: p:20, a:PCMU, s:off

M: recvonly

R: D/[0-9ABCD*#]

Q: process,loop

*Mar 1 00:37:24.927: send_mgcp_msg, MGCP Packet sent to 172.16.240.124 --->

```
*Mar 1 00:37:24.927: 200 344 OK
<--- *Mar 1 00:37:24.939: MGCP Packet received from
172.16.240.124-
RQNT 345 S0/SU2/ds1-0/23@AV-2620-4 MGCP 0.1
X: 17
S:

*Mar 1 00:37:24.947: send_mgcp_msg, MGCP Packet sent to
172.16.240.124 --->

*Mar 1 00:37:24.947: 200 345 OK
<---
*Mar 1 00:37:24.979: MGCP Packet received from
172.16.240.124-
MDCX 346 S0/SU2/ds1-0/23@AV-2620-4 MGCP 0.1
C: D00000000100009e0000000080000009
I: 5
X: 17
L: p:20, a:PCMU, s:off
M: sendrecv
R: D/[0-9ABCD*#]
S:
Q: process,loop

v=0
o=- 5 0 IN EPN S0/SU2/ds1-0/23@AV-2620-4
s=Cisco SDP 0
t=0 0
c=IN IP4 172.16.240.126
m=audio 29380 RTP/AVP 96
a=rtpmap:96 PCMU

*Mar 1 00:37:24.991: send_mgcp_msg, MGCP Packet sent to
172.16.240.124 --->

*Mar 1 00:37:24.991: 200 346 OK
<---
*Mar 1 00:37:32.243: MGCP Packet received from
172.16.240.124-
MDCX 347 S0/SU2/ds1-0/23@AV-2620-4 MGCP 0.1
C: D00000000100009e0000000080000009
I: 5
X: 17
M: recvonly
R: D/[0-9ABCD*#]
Q: process,loop

*Mar 1 00:37:32.251: send_mgcp_msg, MGCP Packet sent to
172.16.240.124 --->

*Mar 1 00:37:32.251: 200 347 OK
<---
*Mar 1 00:37:32.319: MGCP Packet received from
172.16.240.124-
DLCX 348 S0/SU2/ds1-0/23@AV-2620-4 MGCP 0.1
C: D00000000100009e0000000080000009
I: 5
X: 17
S:

*Mar 1 00:37:32.343: send_mgcp_msg, MGCP Packet sent to
172.16.240.124 --->
```

```

*Mar 1 00:37:32.343: 250 348
P: PS=363, OS=58080, PR=363, OR=58080, PL=0, JI=512, LA=0
<---
*Mar 1 00:37:42.955: send_mgcp_msg, MGCP Packet sent to
172.16.240.124 --->

*Mar 1 00:37:42.955: NTFY 147 *@AV-2620-4 MGCP 0.1
X: 0
0:
<---
*Mar 1 00:37:42.967: MGCP Packet received from
172.16.240.124-
AUEP 349 S0/SU2/ds1-0/1@AV-2620-4 MGCP 0.1
F: X

*Mar 1 00:37:42.971: send_mgcp_msg, MGCP Packet sent to
172.16.240.124 --->

*Mar 1 00:37:42.971: 200 349
<---
*Mar 1 00:37:42.975: MGCP Packet received from
172.16.240.124-
200 147

AV-2620-4#und all
All possible debugging has been turned off

```

Troubleshoot

Cause i = 0x82B2 – Requested facility

In an ISDN PRI circuit configured as an MGCP gateway, outbound calls fail. The **debug isdn q931** command shows the disconnect cause code as Cause i = 0x82B2 – Requested facility not subscribed.

When you view the **debug isdn q931** Disconnect Cause Codes, it appears to be a problem that occurs at the local Telco switch due to a requested facility that is not subscribed. In order to resolve this issue, uncheck **Sending calling name in Facility IE** and **Display IE** on the Cisco CallManager Gateway Configuration page. Refer to CallManager and Calling Party Name for more information.

Issue the **no mgcp** and then the **mgcp** command in global configuration mode on the MGCP gateway router in order to reset the MGCP gateway from the Cisco CallManager.

Cause i = 0x80E5 – Message not compatible with call state

In an ISDN PRI circuit configured as an MGCP gateway, inbound calls fail. The **debug isdn q931** command shows these disconnect cause codes:

```

Cause i = 0x80E10D - Message type not implemented.
Cause i = 0x80E5 - Message not compatible with call state.


```

By Default, when telco sends the full number (**en-bloc** mode), Cisco CallManager sends back the **SETUP_ACK** waiting for more numbers (**overlap** mode) as the **Overlap Receiving Flag** is set to **True** by default. In this case, the Cisco CallManager receives an **ISDN STATUS** message as a response to the **SETUP_ACK** sent to the PSTN switch. The **ISDN STATUS** message is not recognized by Cisco

CallManager at this state of the call and hence the issue.

In order to resolve the issue, you need to set the `Overlap Receiving Flag` parameter in Cisco CallManager to be **FALSE**. Then, Cisco CallManager does not send the `SETUP_ACK` and PSTN does not reply back with the `ISDN STATUS` message.

Related Information

- [Interworking of Cisco MGCP Voice Gateways and Cisco CallManager Version 3.1](#)
- [Release Notes for Cisco IOS Software Release 12.4\(6\)XT](#)
- [Voice Technology Support](#)
- [Voice and Unified Communications Product Support](#)
- [Troubleshooting Cisco IP Telephony](#) 
- [Technical Support & Documentation – Cisco Systems](#)

[Contacts & Feedback](#) | [Help](#) | [Site Map](#)

© 2014 – 2015 Cisco Systems, Inc. All rights reserved. [Terms & Conditions](#) | [Privacy Statement](#) | [Cookie Policy](#) | [Trademarks of Cisco Systems, Inc.](#)

Updated: Oct 13, 2008

Document ID: 23966
