



# Grandstream Networks, Inc.

---

## WiFi & LED Scheduling Guide



## Table of Contents

<b>INTRODUCTION.....</b>	<b>3</b>
<b>GWN DEPLOYMENT AND CONFIGURATION.....</b>	<b>4</b>
Easy provisioning for mass deployment.....	4
Accessing the Web GUI.....	5
<b>WIFI SCHEDULE.....</b>	<b>6</b>
Overview & Usage.....	6
Configuration steps.....	6
<i>Default SSID</i> .....	6
<i>Additional SSID</i> .....	7
<b>LED SCHEDULE .....</b>	<b>9</b>
Overview & Usage.....	9
Configuration Steps.....	9

## Table of Figures

Figure 1: GWN76XXs Setup Sample .....	4
Figure 2: GWN7610 Web GUI Login Page .....	5
Figure 3: WiFi Schedule.....	7
Figure 4: Additional SSID Schedule.....	8
Figure 5: LED Schedule Settings .....	10

## Table of Tables

Table 1 : LED Schedule settings .....	9
---------------------------------------	---



## INTRODUCTION

Grandstream GWN76xx Access points series support WiFi & LED schedulers which are two features that can help arrange on a flexible way the usage of the device based on customer's need. Hence when it is not needed the wireless signal can be disabled based on a schedule (ex: during out of office hours, weekends ...etc.).

The same goes for the LEDs scheduler feature where you have the choice between permanently disabling (turn off) LEDs of the AP or schedule specific time when they will be turned on. This can be helpful for example when the LED lights are disturbing during some period of times or not needed at all.

LED or WiFi Scheduling configuration can be done from either GWN7000 acting as controller for GWN76xx access points or on Master GWN76xx access points directly. In both cases, the configuration will be reflected on paired access points.

This guide covers basic overview and usage of these features and steps needed to configure and activate the schedule on either GWN76XX access points or GWN7000 router.

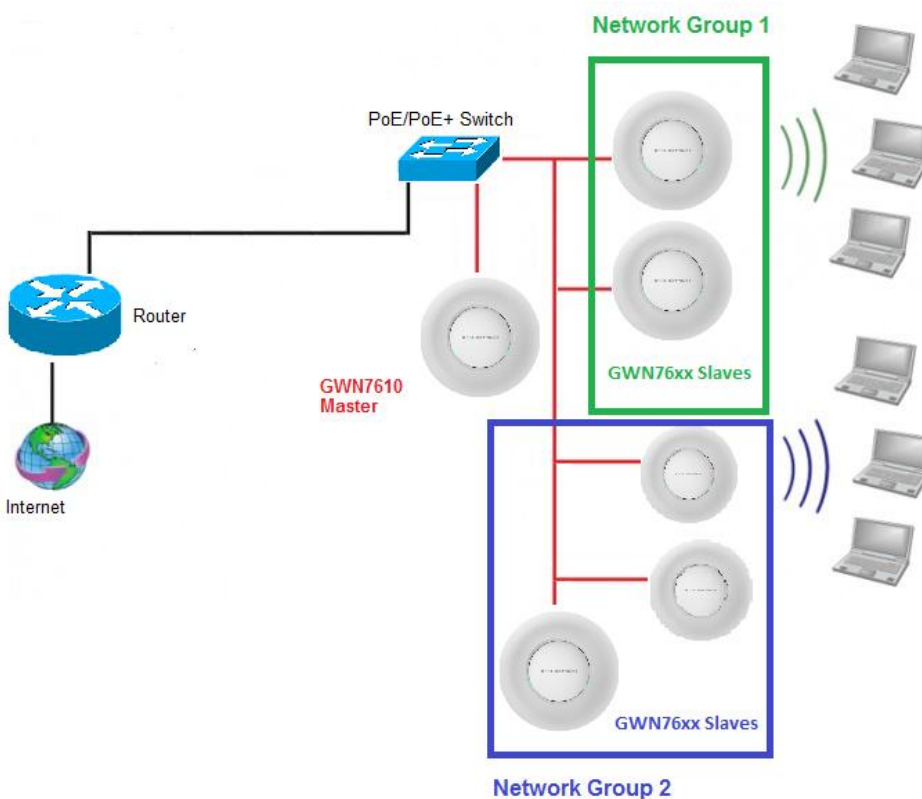


# GWN DEPLOYMENT AND CONFIGURATION

## Easy Provisioning for Mass Deployment

The GWN comes with a built-in controller in order to use it either on a standalone deployment or in mass deployment environment where the configuration can be done either from one GWN76XX acting as a controller for the rest of the APs or you can configure all your AP from the GWN7000 router which then will push the configuration to all the Access points via the LAN connection.

For instance, when we use the WiFi or LED schedule features, then the configuration should be done only from the master Access point or the GWN7000 router and it will be reflected on all the rest of the access points automatically via provisioning process.



**Figure 1: GWN76XXs Setup Sample**

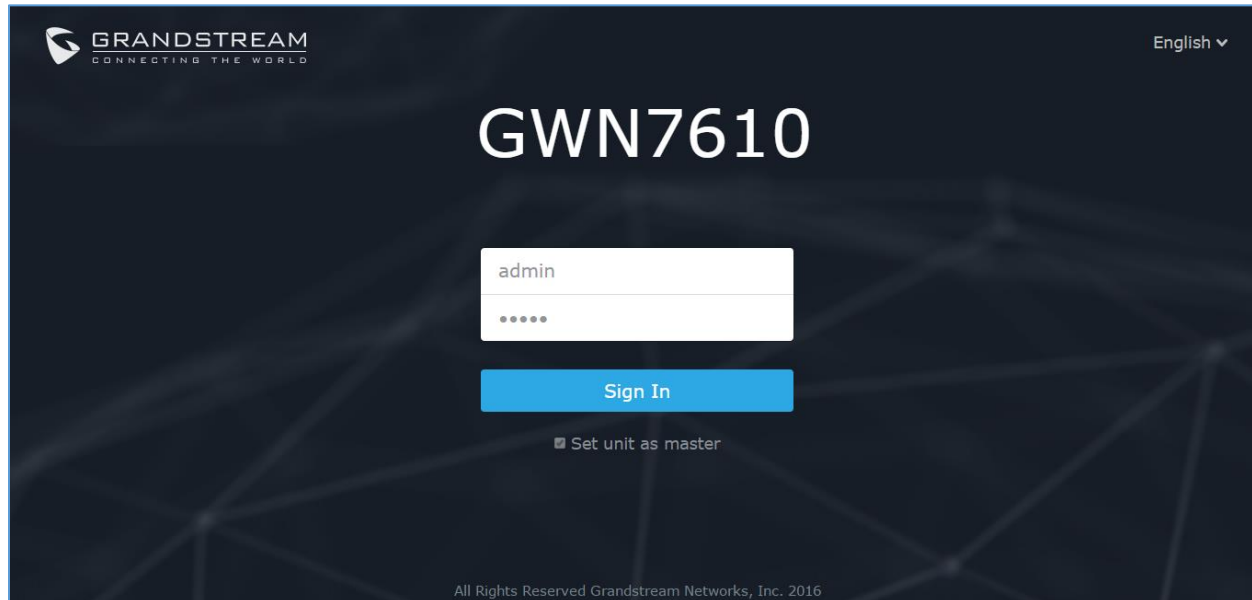
For the rest of this guide we assume that you are familiar with Master/Slave configuration and deployment scenario, and for any further details please refer to the following guide:

[GWN76XX master Slave architecture guide](#)



## Accessing the Web GUI

The GWN7XXX has embedded Web server which responds to HTTPS GET/POST, this is mainly used to provide an easy and organized web GUI configuration interface for admins & users. Note that **access** to GWN76XX web GUI **is not possible** if it has been **paired** with another GWN76XX AP acting as master or a paired with a GWN7000 router.



**Figure 2: GWN7610 Web GUI Login Page**

To access the Web GUI:

1. Make sure to use a computer connected to the same local network as the GWN7610.
2. Ensure the device is properly powered up.
3. Open a Web browser on the computer and type in the URL using the IP address which you can get from your DHCP bindings, or use a scanner with the following format: <https://IP Address>
4. Enter the administrator's login and password to access the Web Configuration Menu. The default administrator's username and password are "admin" and "admin".

On the next parts we will go through an overview of the WiFi & LED schedule features as well as the configuration/activation steps.



## WIFI SCHEDULE

### Overview & Usage

The main usage of WiFi scheduler is obviously to schedule the times when the WiFi is ON or OFF, this will give the user a flexible way to control his AP. For example, in most cases the WiFi signal is not needed in out of office hours and instead of turning off the access point, the user can set a schedule based on office hours and the AP will shut down the wireless signal during out of office hours.

Another usage is to have the possibility to schedule the broadcasting of a specific SSID at one interval or time and schedule another SSID to be broadcasted on another interval time, for example: you may want to have free SSID for guest during specific periods of time and turn it off when it is not needed. This is possible with GWN since it allows the scheduling based on SSID.

### Configuration Steps

WiFi schedule is based on SSID providing more configuration flexibility. If using default SSID, WiFi schedule can be configured from Network Group settings.

The configuration can be done from either GWN7000 acting as controller for GWN76xx access points or on Master GWN76xx access points directly. In both cases, the configuration will be reflected on paired access points.

### Default SSID

To configure WiFi Schedule for default SSID, follow below steps:

1. Access GWN web interface.
2. Go to "Network Groups -> Select/Edit Group -> Schedule".
3. Set the following options:
  - **Enable Wireless Schedule:** check this box to enable the feature.
  - Select days (Monday, Tuesday...) when WiFi scheduling will be applied.
  - Set **Start Time** (*h:m* format) and **End Time** (*h:m* format) for each day when the wireless signal will be automatically shut down.
  - Save and apply the settings to activate the feature.



Edit ✕

Basic
Wi-Fi
Device Membership
Schedule

Enable Wireless Schedule	<input checked="" type="checkbox"/>	
Sunday	<input type="checkbox"/>	
Monday	<input checked="" type="checkbox"/>	
Schedule Start Time	<input type="text" value="8"/>	: <input type="text" value="0"/>
Schedule End Time	<input type="text" value="17"/>	: <input type="text" value="0"/>
Tuesday	<input checked="" type="checkbox"/>	
Schedule Start Time	<input type="text" value="8"/>	: <input type="text" value="0"/>
Schedule End Time	<input type="text" value="17"/>	: <input type="text" value="0"/>
Wednesday	<input checked="" type="checkbox"/>	
Schedule Start Time	<input type="text" value="8"/>	: <input type="text" value="0"/>
Schedule End Time	<input type="text" value="17"/>	: <input type="text" value="0"/>
Thursday	<input checked="" type="checkbox"/>	
Schedule Start Time	<input type="text" value="8"/>	: <input type="text" value="0"/>
Schedule End Time	<input type="text" value="17"/>	: <input type="text" value="0"/>

Save
Cancel

**Figure 3: WiFi Schedule**

In the example above the WiFi is scheduled to be active every day (except weekends) starting from 8:00 AM until 5:00 PM which may correspond to the office working hours.

**Note:** The hour field is in 24 format (from 0 to 23). Valid range for minutes is 0-59.

### Additional SSID

To configure WiFi Schedule for Additional SSID, follow below steps:

1. Access GWN web interface.
2. Go to menu “Network Groups -> Additional SSID -> Select/Edit SSID -> Schedule”.
3. Set the following options:
  - **Enable Wireless Schedule:** check this box to enable the feature.
  - Select days (Monday, Tuesday...) when WiFi scheduling will be applied.



- Set **Start Time** (*h:m* format) and **End Time** (*h:m* format) for each day when the wireless signal will be automatically shut down.
- Save and apply the settings to activate the feature.

Below is an example for an SSID which is set to work only on the weekends in the evenings (Saturday and Sunday from 6:00 PM until midnight).

**Edit**

Wi-Fi**Schedule**

---

Enable Wireless Schedule	<input checked="" type="checkbox"/>
Sunday	<input checked="" type="checkbox"/>
Schedule Start Time	<input type="text" value="18"/> : <input type="text" value="0"/>
Schedule End Time	<input type="text" value="23"/> : <input type="text" value="59"/>
Monday	<input type="checkbox"/>
Tuesday	<input type="checkbox"/>
Wednesday	<input type="checkbox"/>
Thursday	<input type="checkbox"/>
Friday	<input type="checkbox"/>
Saturday	<input checked="" type="checkbox"/>
Schedule Start Time	<input type="text" value="18"/> : <input type="text" value="0"/>
Schedule End Time	<input type="text" value="23"/> : <input type="text" value="59"/>

**Save** Cancel

**Figure 4: Additional SSID Schedule**





## LED SCHEDULE

### Overview & Usage

Besides the WiFi scheduler, GWN76XX Access Points series support also the LED schedule feature. This feature is used to set the timing when the LEDs are ON and when they will go OFF at customer's convenience.

This can be useful for example when the LEDs become disturbing during some periods of the day, and an illustration example would be hotel rooms where the LED lights can be annoying to clients at night but you still don't want to shut down completely the WiFi Access point, this way the LED scheduler feature comes in handy on such scenario where you can set the timing so that the LEDs are off at night after specific hours and maintain the WiFi service for other clients without shutting down the AP.

### Configuration Steps

The configuration can be done from either GWN7000 acting as controller for GWN76xx access points or on Master GWN76xx access points directly. In both cases, the configuration will be reflected on paired access points.

To configure LED schedule, follow below steps:

1. Access GWN7000 router acting as controller or Master GWN76xx web interface.
2. Go to "System Settings -> LEDs".
3. Following options are available:

**Table 1 : LED Schedule settings**

Option	Description
LEDs Always off	Turn off completely the LEDs.
Schedule Start Hour	Configure the hour when LEDs will be automatically turned on.
Schedule Start Minute	Configure the minute when LEDs will be automatically turned on.
Schedule Stop Hour	Configure the hour when LEDs will be automatically turned off.
Schedule Stop Minute	Configure the minute when LEDs will be automatically turned off.
Schedule weekdays list	Choose the days for which you want to schedule the LEDs.

In the example below, the LEDs are programmed/scheduled to be turned on from 7:30AM to 8:30 PM during all days, out of this time range, the LEDs will be off.



LEDs

LEDs Always Off  ?

Schedule Start Hour  ?

Schedule Start Minute  ?

Schedule Stop Hour  ?

Schedule Stop Minute  ?

Schedule Weekdays List of Weekdays

Sunday

Monday

Tuesday

Wednesday

Thursday

Friday

Saturday

**Figure 5: LED Schedule Settings**

